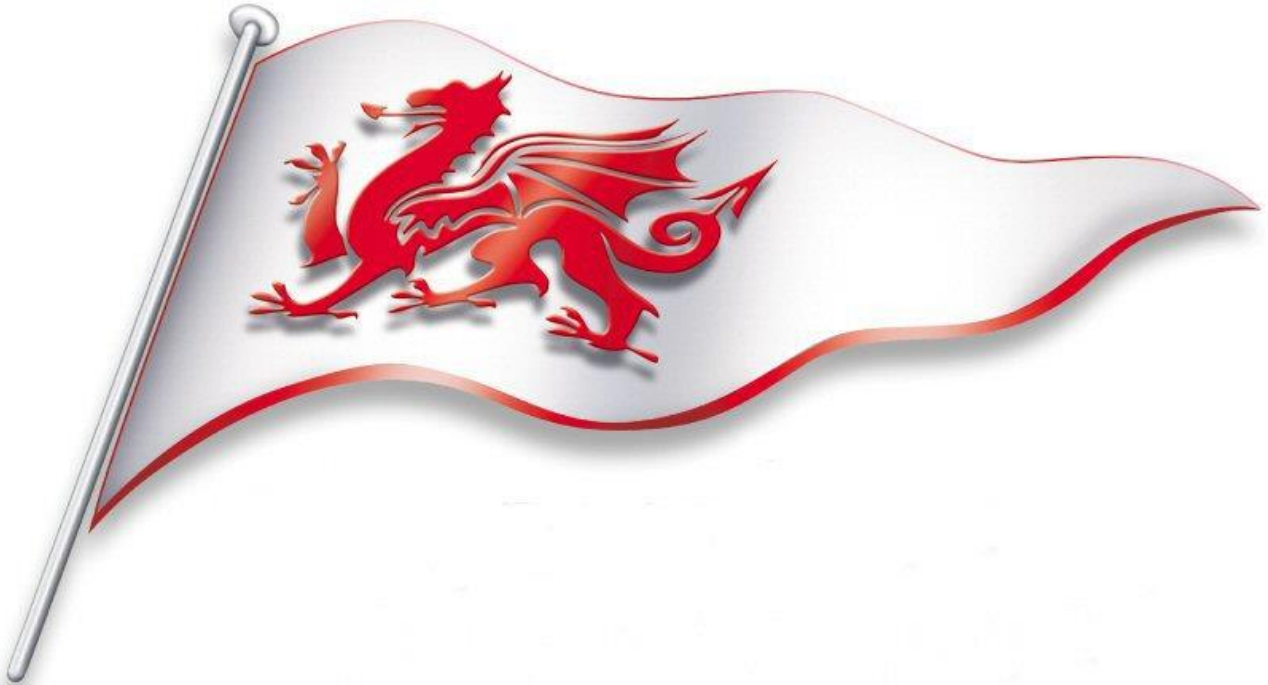
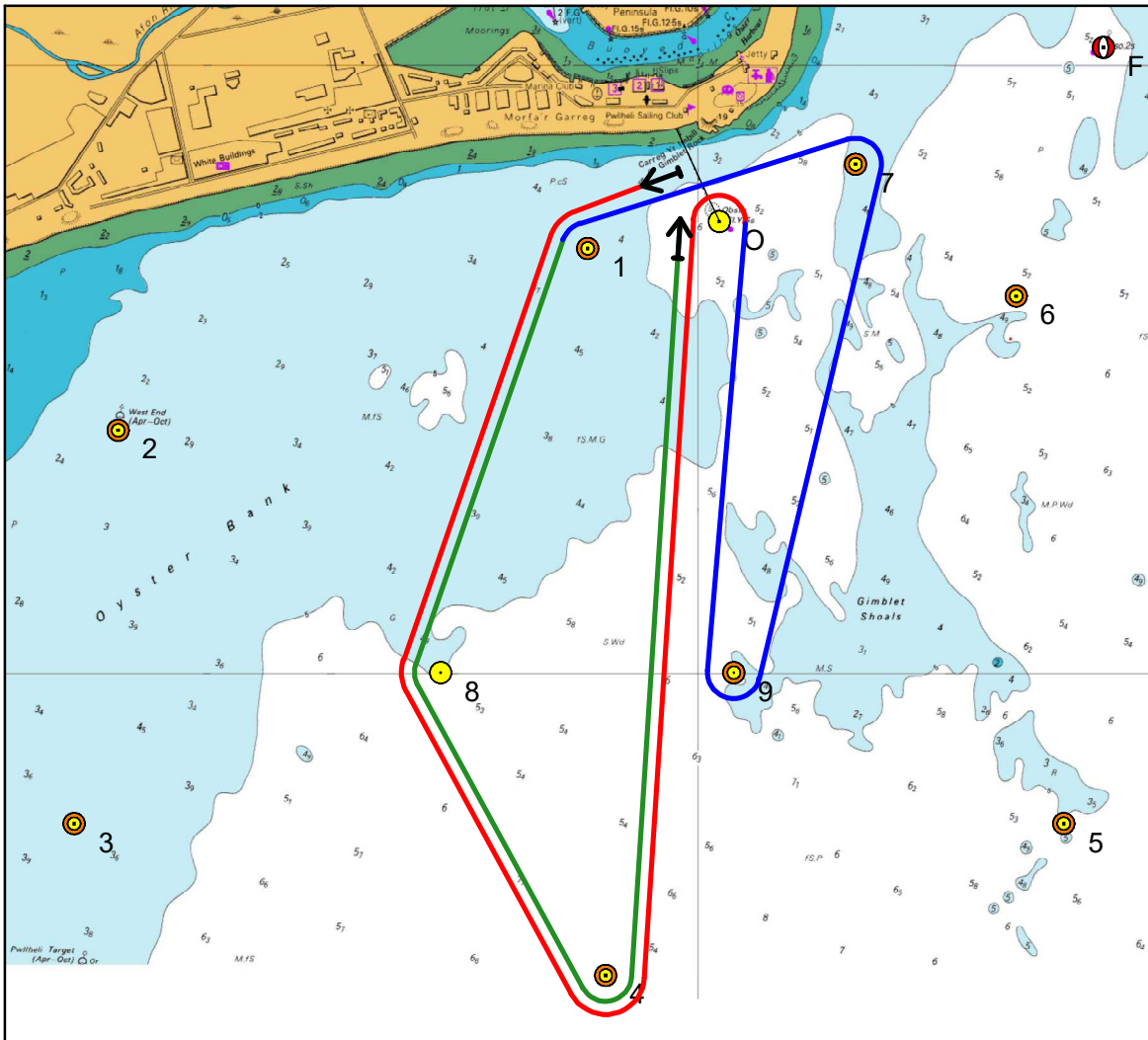


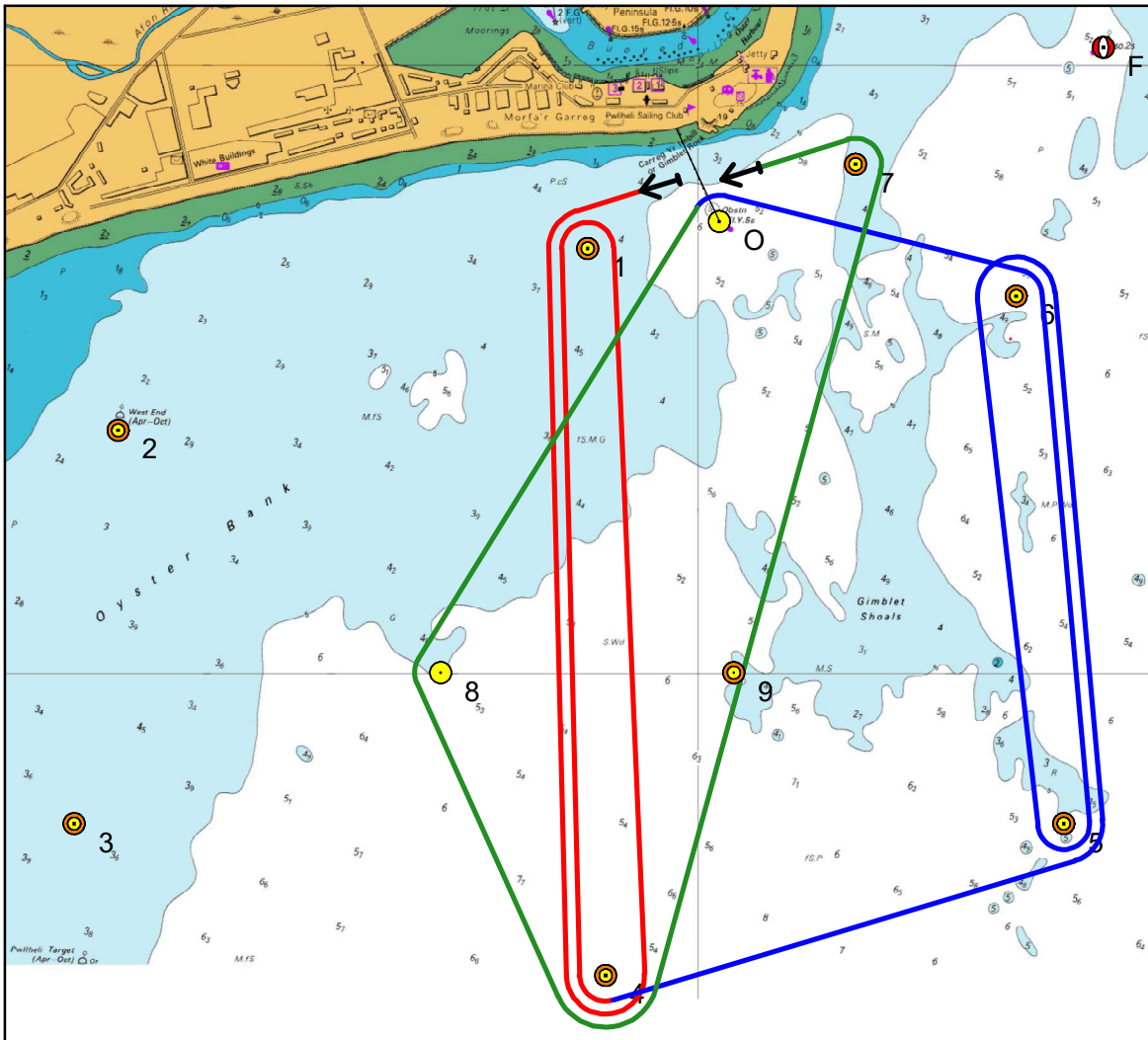
# CHPSC Course Cards





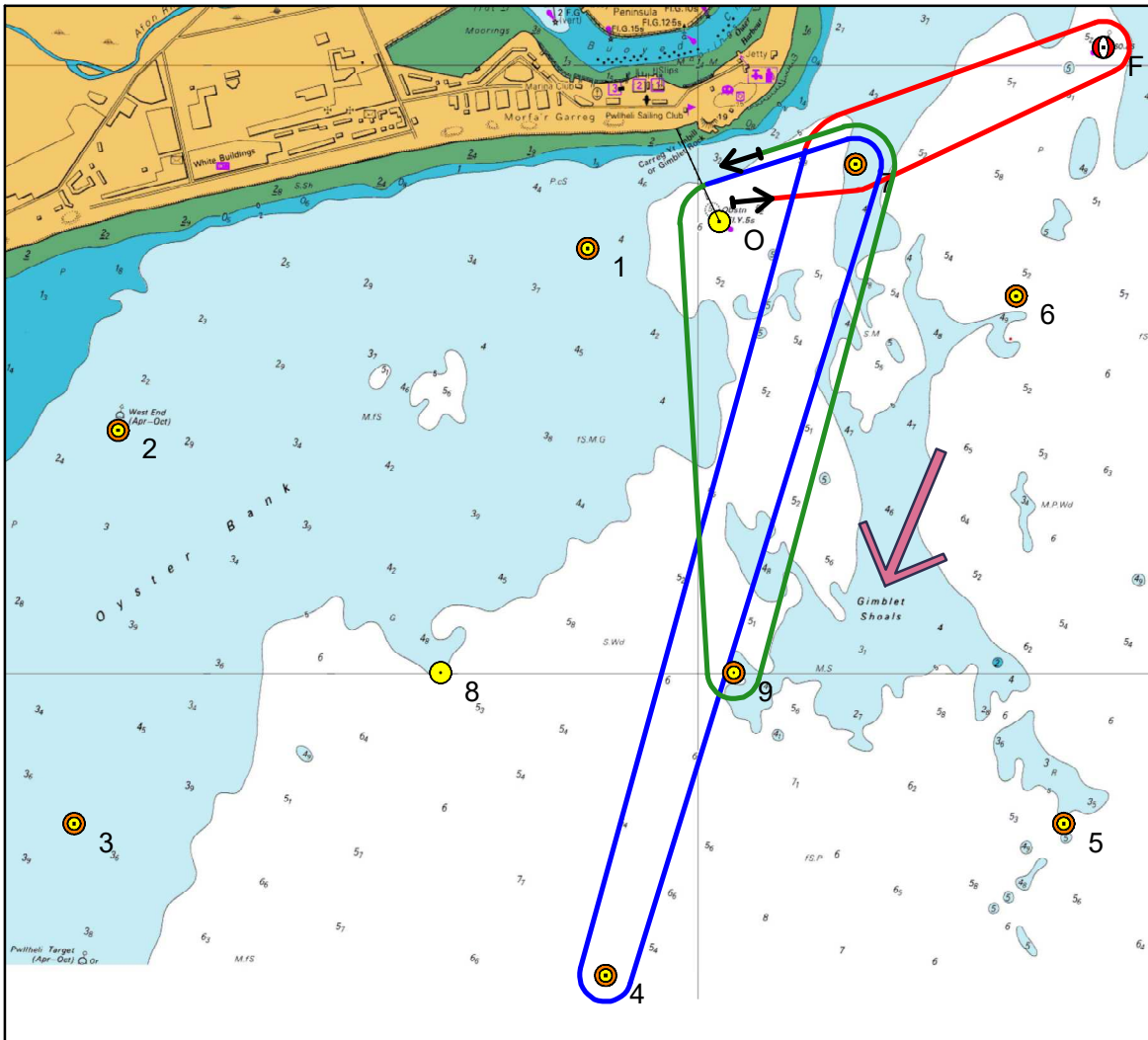


2	Wind	0
	Length	7.4
Mark	Heading	Distance
1p	257	0.21
8p	199	0.74
4p	151	0.57
0s	008	1.26
9p	177	0.75
7p	013	0.86
1p	252	0.46
8p	199	0.74
4p	151	0.57
0s	008	1.26

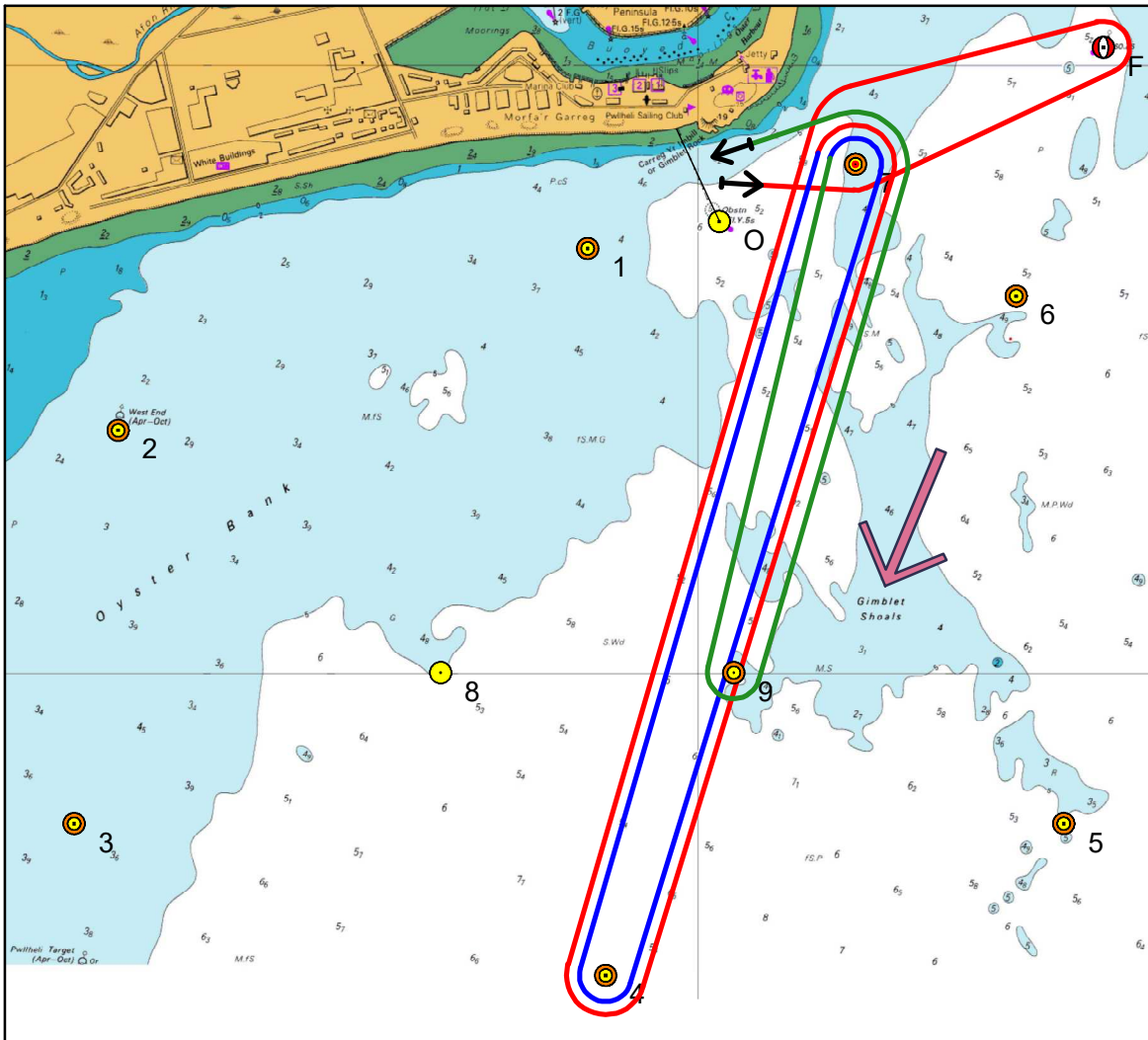


3	Wind	349-11
	Length	10.7
Mark	Heading	Distance
1p	257	0.21
4p	179	1.20
1p	359	1.20
4p	179	1.20
5p	072	0.80
6p	354	0.81
5p	174	0.81
6p	354	0.81
0p	292	0.53
8p	211	0.87
4p	151	0.57
7p	017	1.40
0p	248	0.25

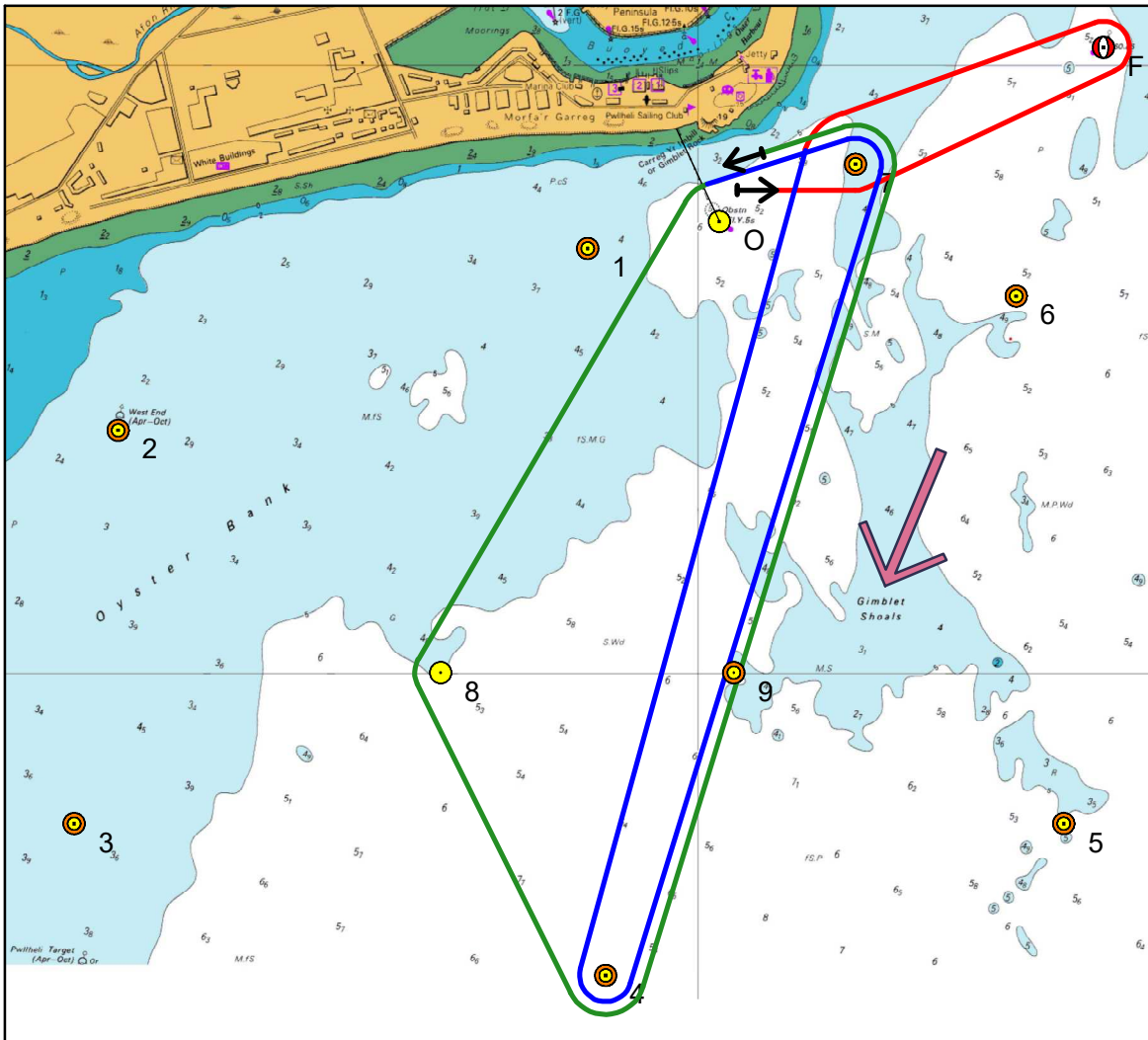




5	Wind	22.5
	Length	5.9
Mark	Heading	Distance
7p	068	0.25
Fp	065	0.38
7p	245	0.38
4p	197	1.40
7p	017	1.40
Op	248	0.25
9p	177	0.75
7p	013	0.86
Op	248	0.25

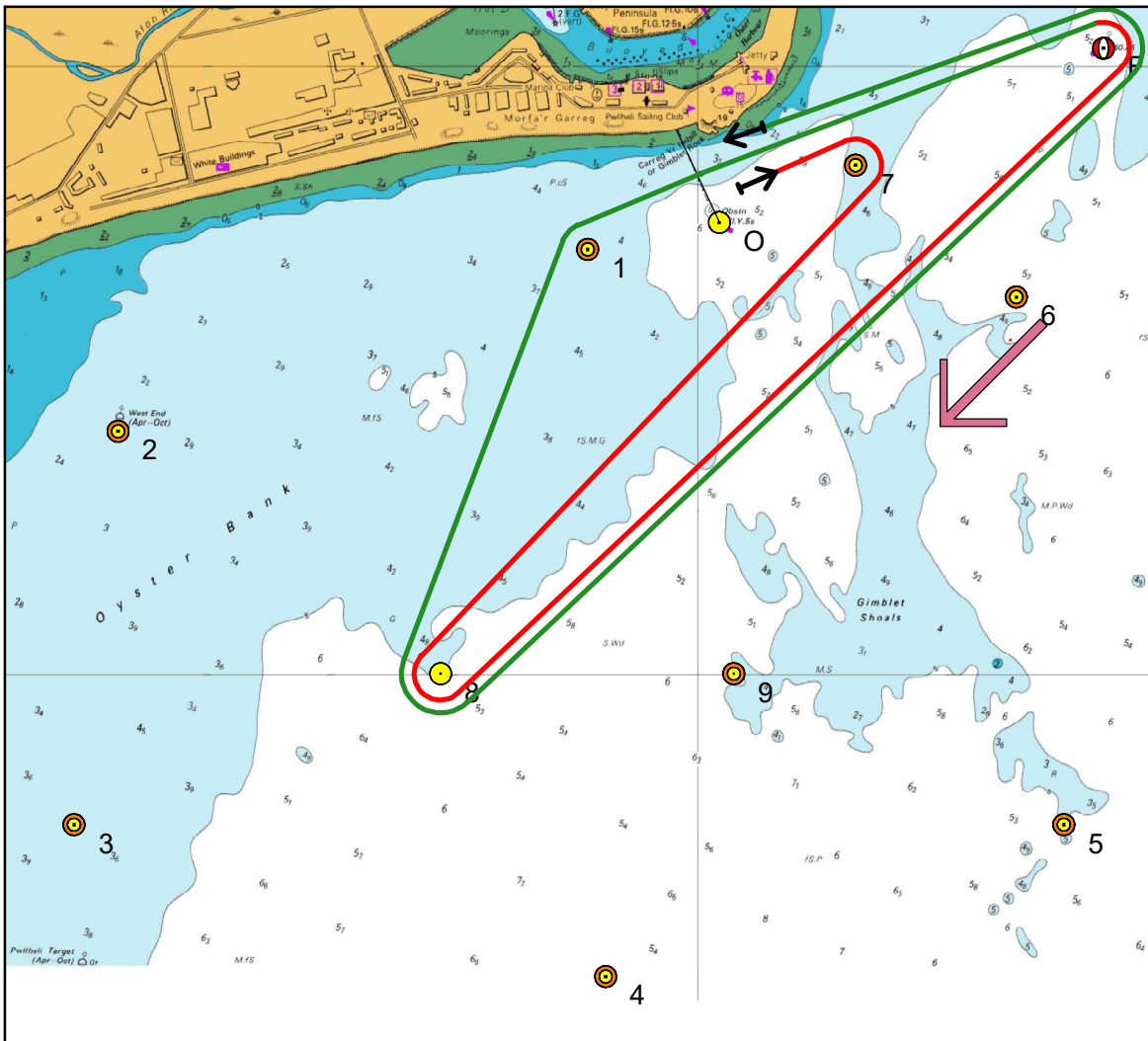


6	Wind	12-33
	Length	8.6
Mark	Heading	Distance
7p	068	0.25
Fp	065	0.38
7p	245	0.38
4p	197	1.40
7p	017	1.40
4p	197	1.40
7p	017	1.40
9p	193	0.86
7p	013	0.86
Op	248	0.25



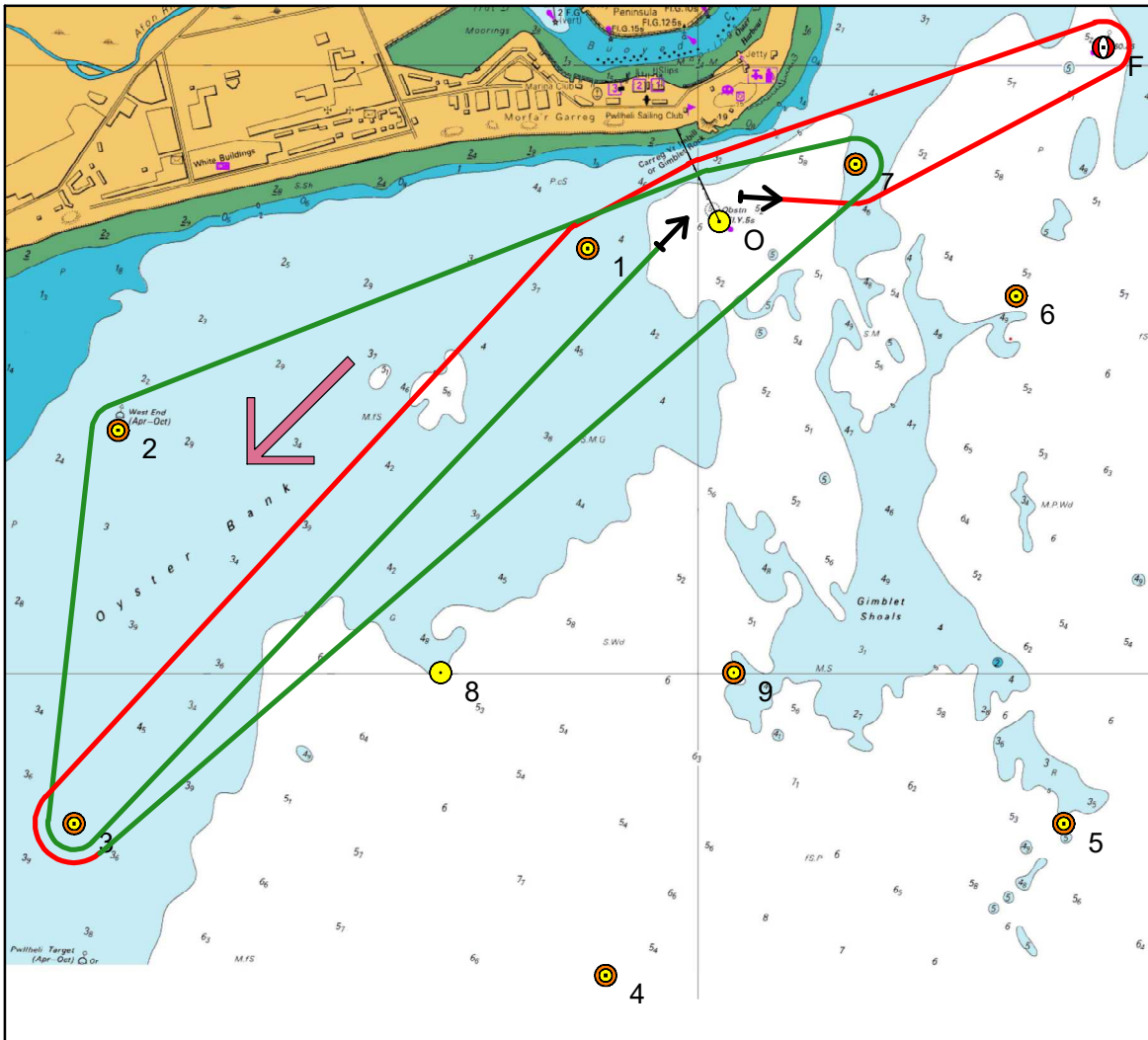
7	Wind	NNE
	Length 7.2	
Mark	Heading	Distance
7p	068	0.25
Fp	065	0.38
7p	245	0.38
4p	197	1.40
7p	017	1.40
Op	248	0.25
8p	211	0.87
4p	151	0.57
7p	017	1.40
Op	248	0.25



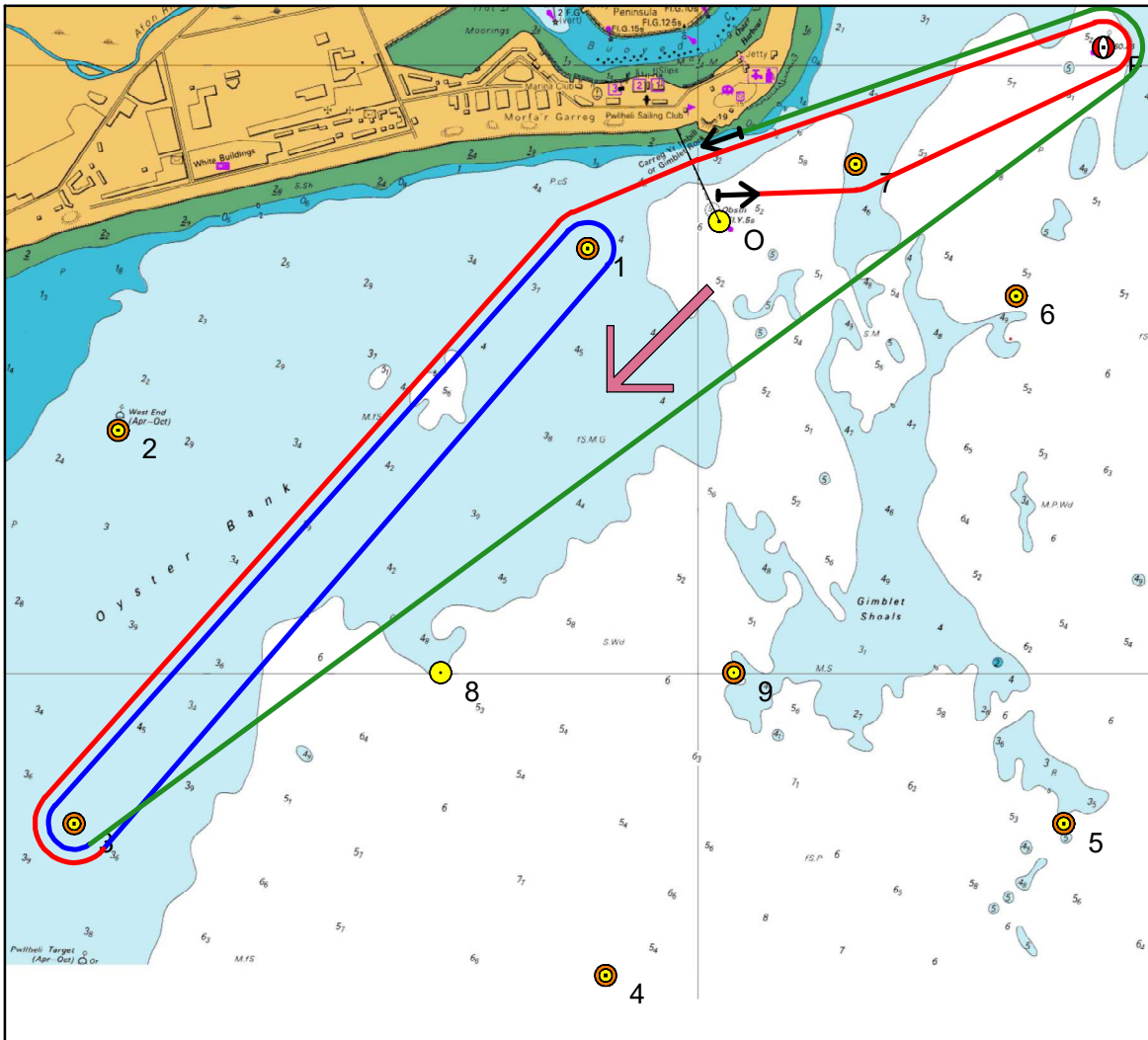


9	Wind	45
	Length	6.4
Mark	Heading	Distance
7s	068	0.25
8p	219	1.08
Fp	046	1.43
Op	246	0.63
1p	257	0.21
8p	199	0.74
Fp	046	1.43
Op	246	0.63





11	Wind	NE
	Length	7.8
Mark	Heading	Distance
7p	068	0.25
Fp	065	0.38
Op	246	0.63
1p	257	0.21
3p	222	1.27
7p	050	1.69
Op	248	0.25
2p	250	1.04
3p	186	0.65
Os	046	1.45



12	Wind	NE
	Length	8.0
Mark	Heading	Distance
7p	068	0.25
Fp	065	0.38
Op	246	0.63
1p	257	0.21
3p	222	1.27
1p	042	1.27
3p	222	1.27
Fp	053	2.06
Op	246	0.63

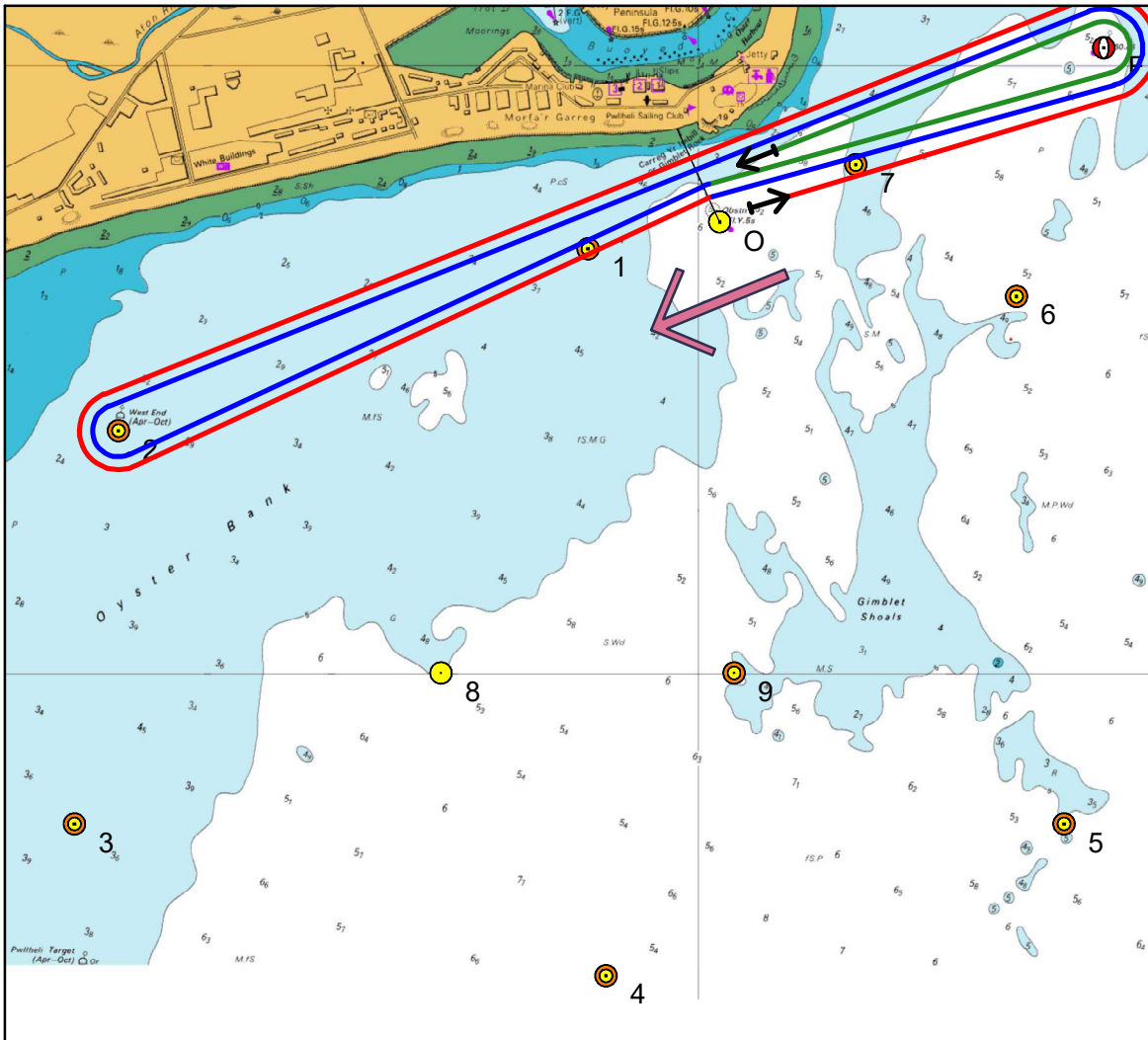










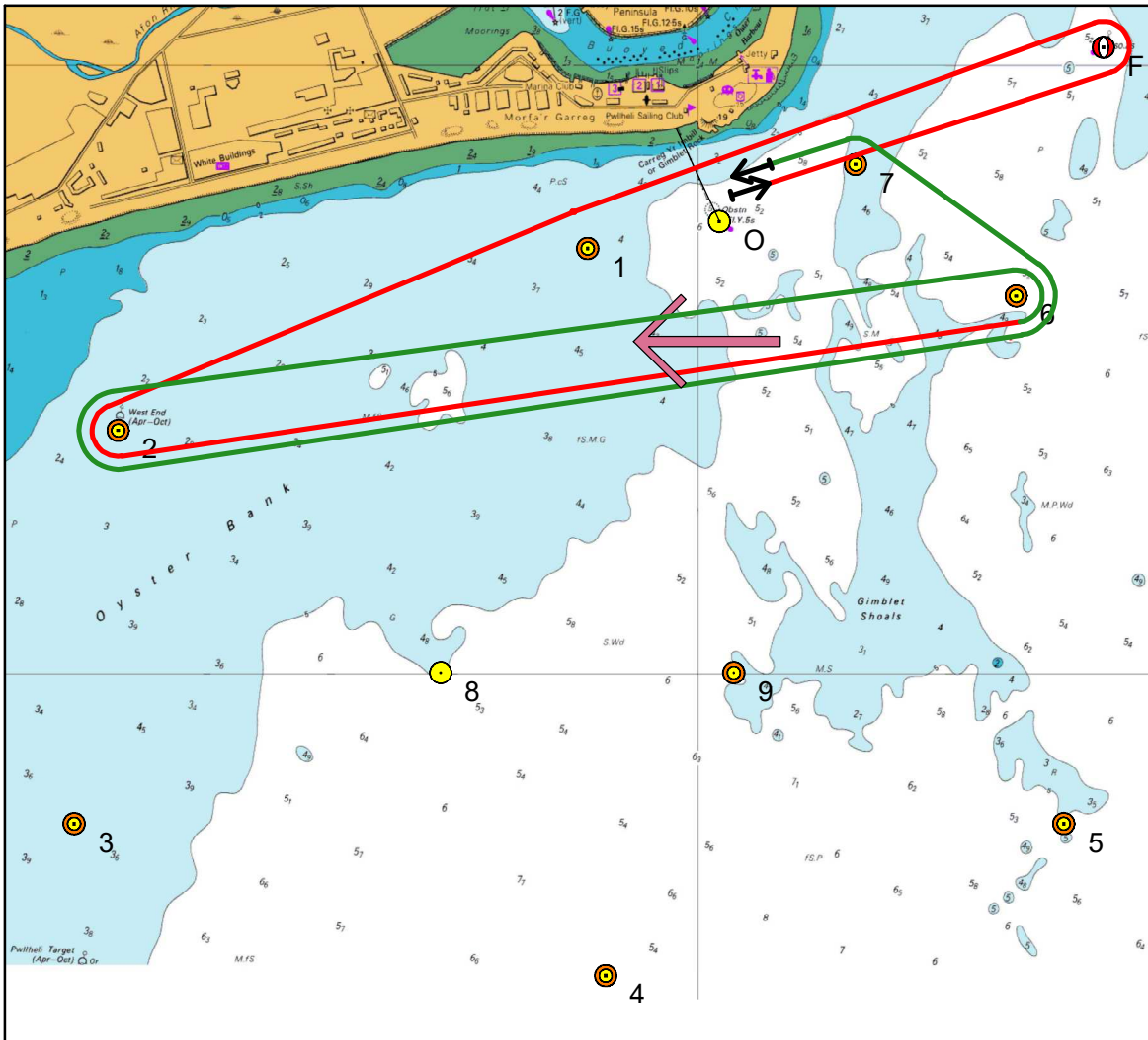


18	Wind	ENE
	Length 7.9	
Mark	Heading	Distance
Fp	066	0.63
2p	249	1.67
Os	070	1.04
Fp	066	0.63
2p	249	1.67
Os	070	1.04
Fp	066	0.63
Op	246	0.63

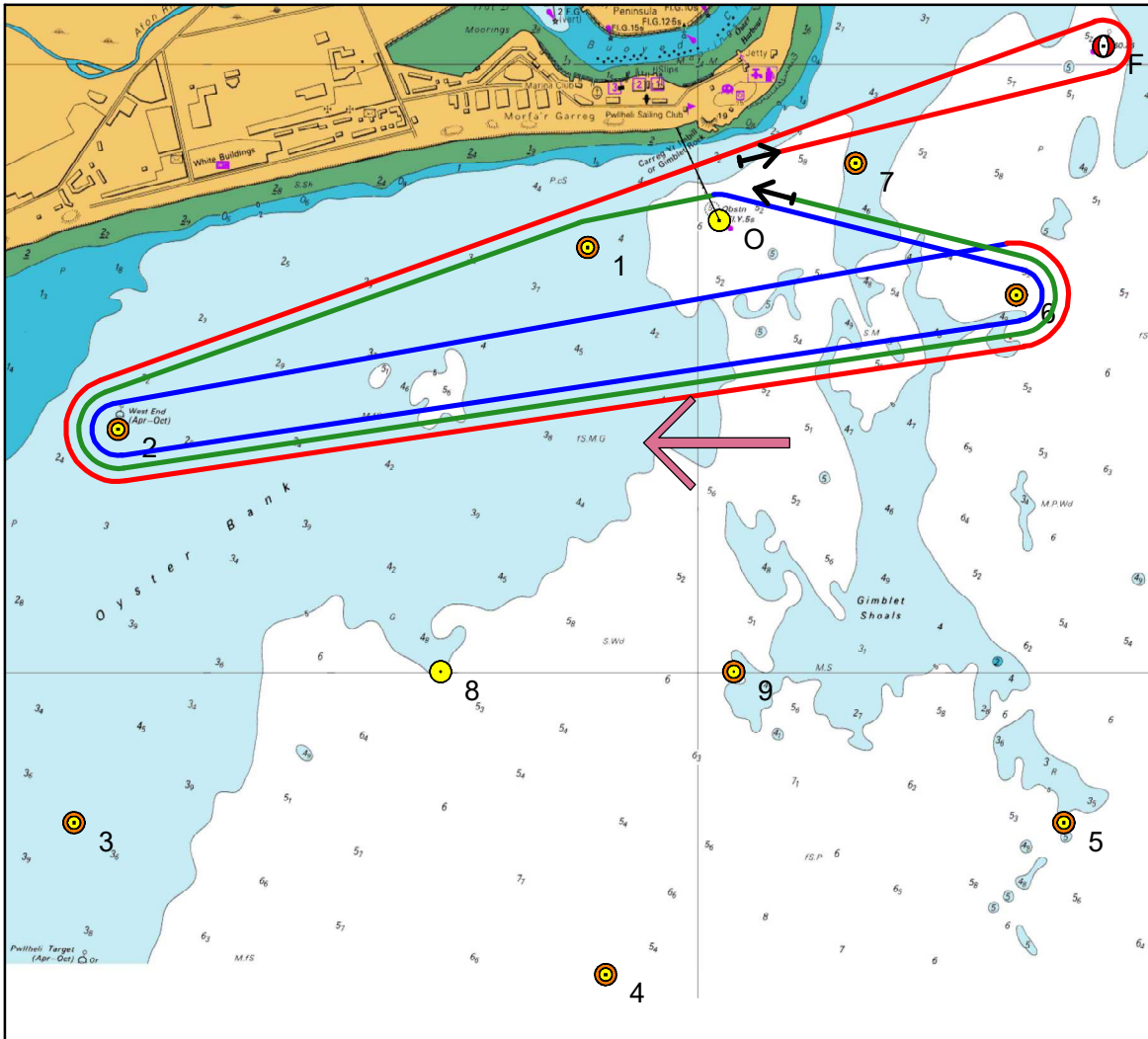




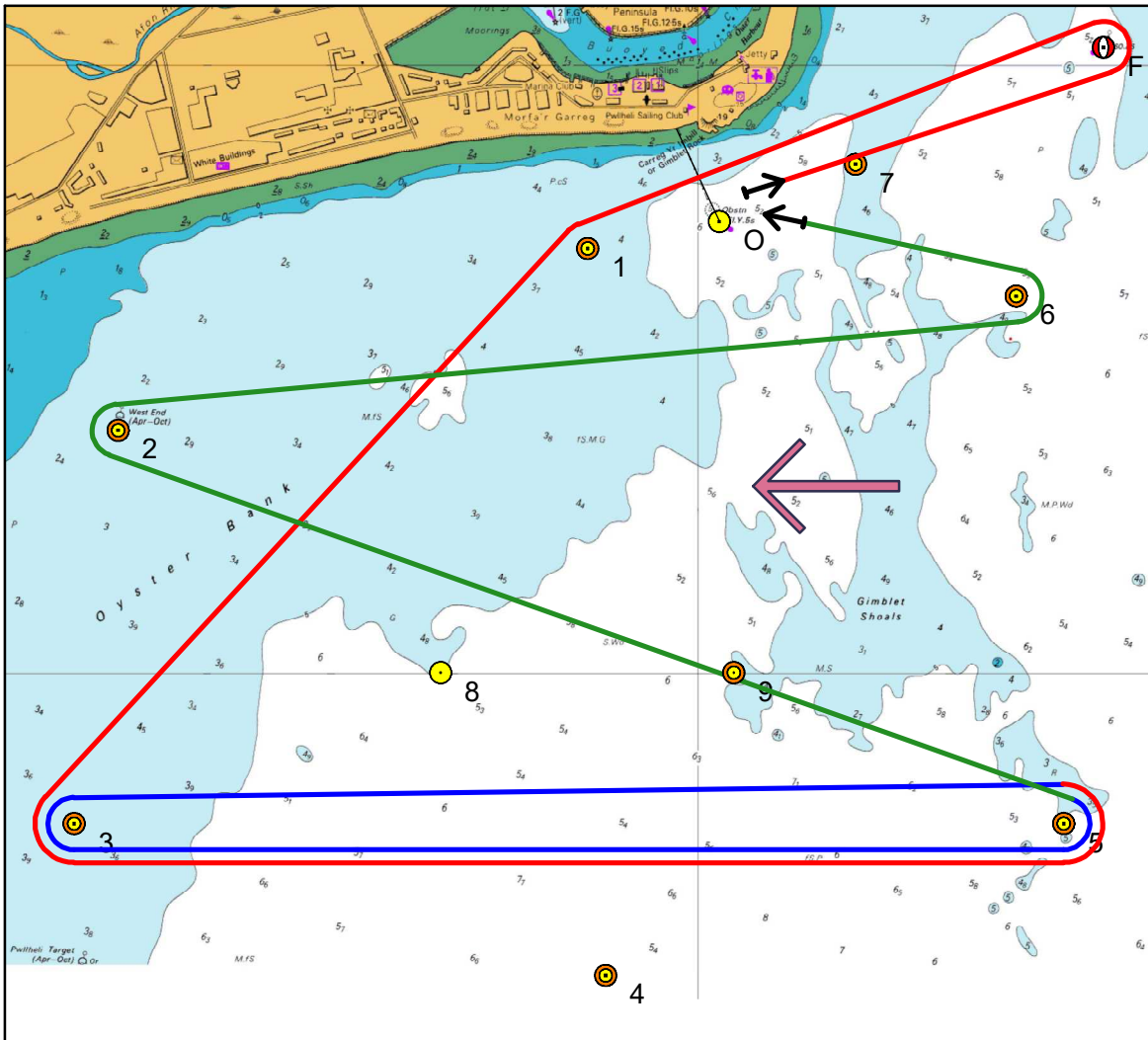




22	Wind	90
	Length	7.4
Mark	Heading	Distance
Fp	066	0.63
1p	249	0.84
2p	249	0.83
6p	084	1.48
2p	264	1.48
6p	084	1.48
7p	319	0.39
Op	248	0.25



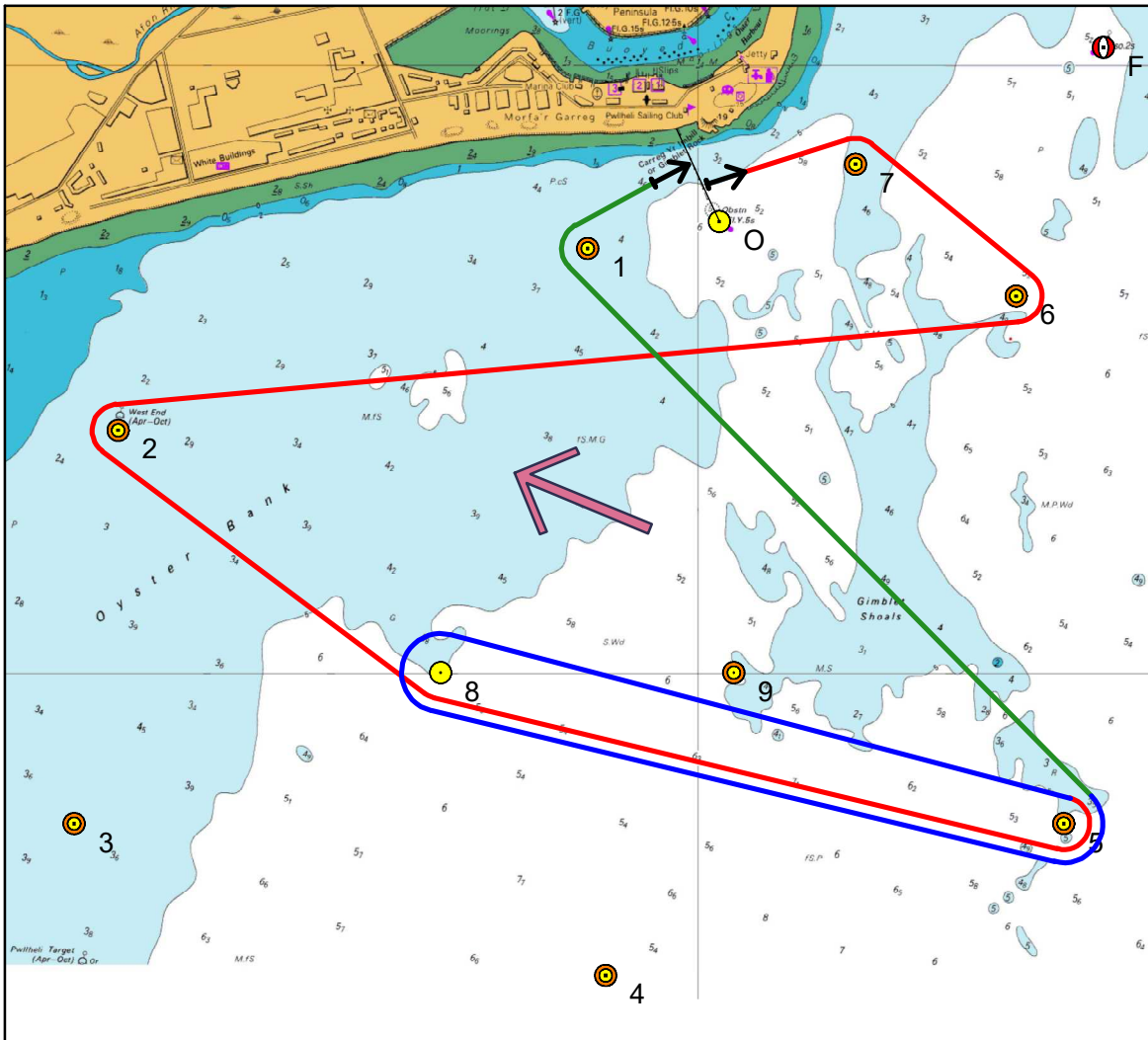
23	Wind	79-101
	Length	10.3
Mark	Heading	Distance
Fp	066	0.63
2p	249	1.67
6p	084	1.48
2p	264	1.48
6p	084	1.48
Op	292	0.53
1p	257	0.21
2p	249	0.83
6p	084	1.48
Op	292	0.53



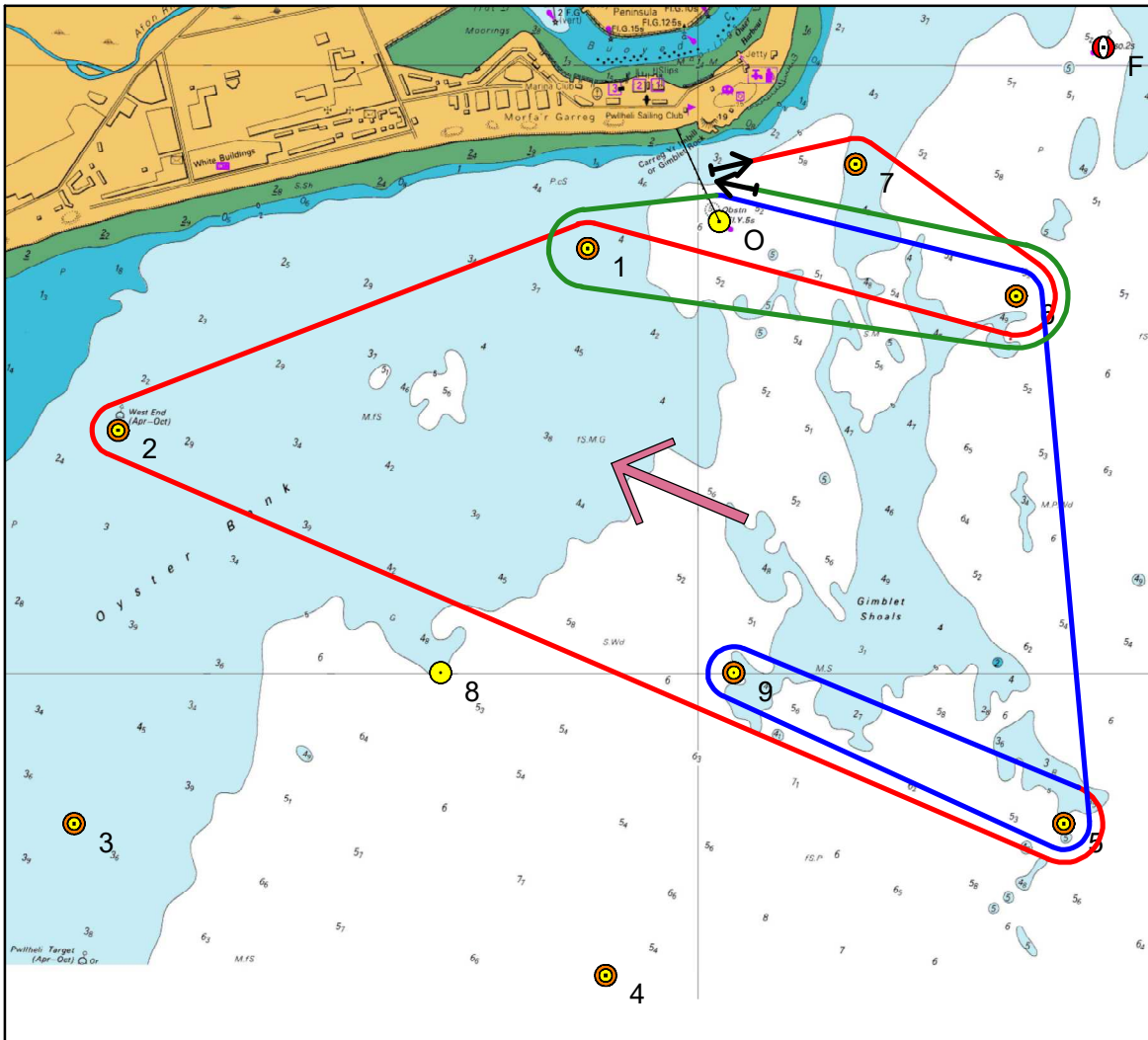
24	Wind	E
	Length	11.3
Mark	Heading	Distance
Fp	066	0.63
1p	249	0.84
3p	222	1.27
5p	090	1.63
3p	270	1.63
5p	090	1.63
2s	293	1.69
6p	084	1.48
Op	292	0.53







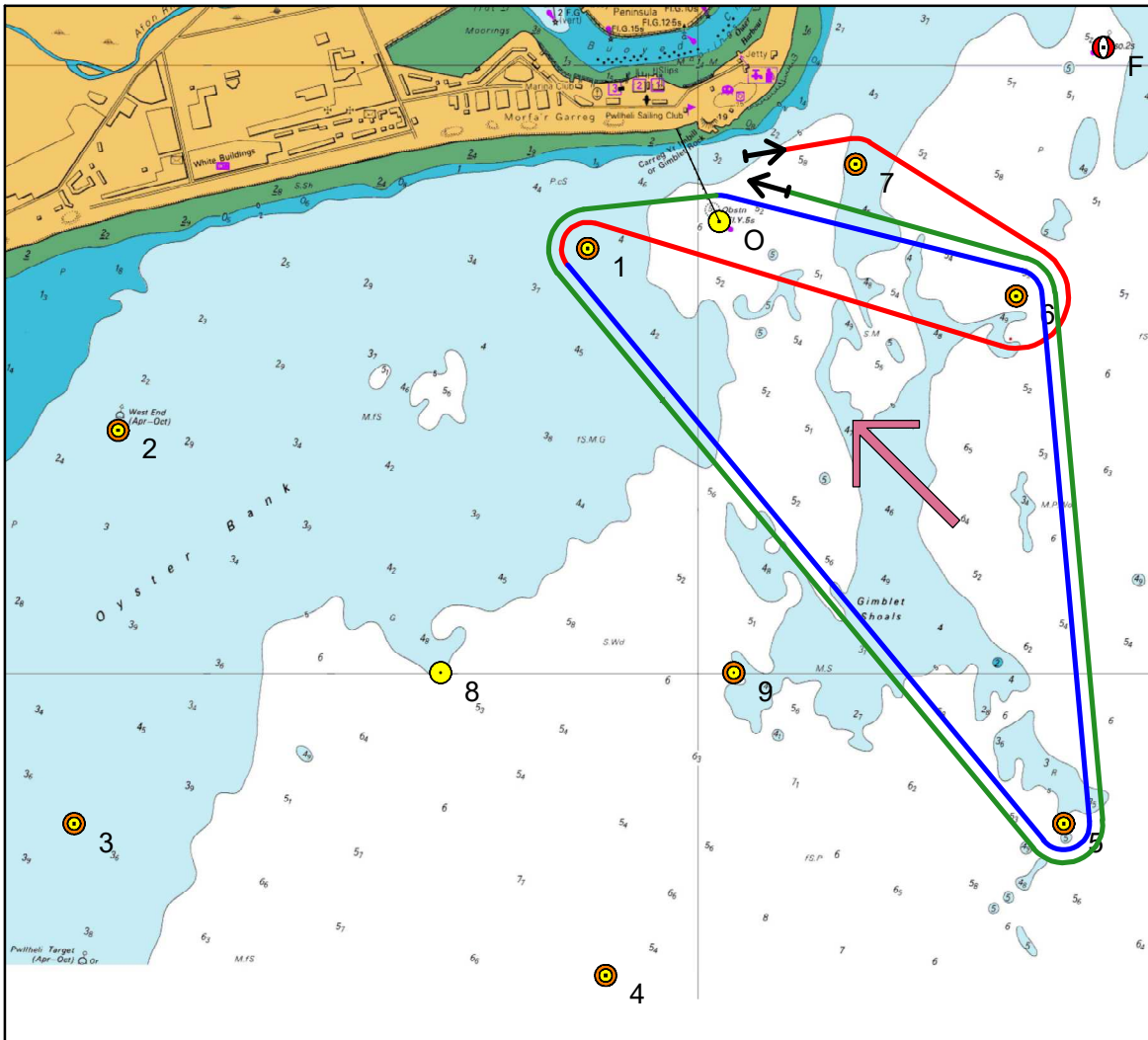
27	Wind	102-123
	Length	7.4
Mark	Heading	Distance
7s	068	0.25
6s	139	0.39
2p	264	1.48
8p	127	0.67
5p	104	1.06
8p	284	1.06
5p	104	1.06
1s	320	1.23
0s	077	0.21



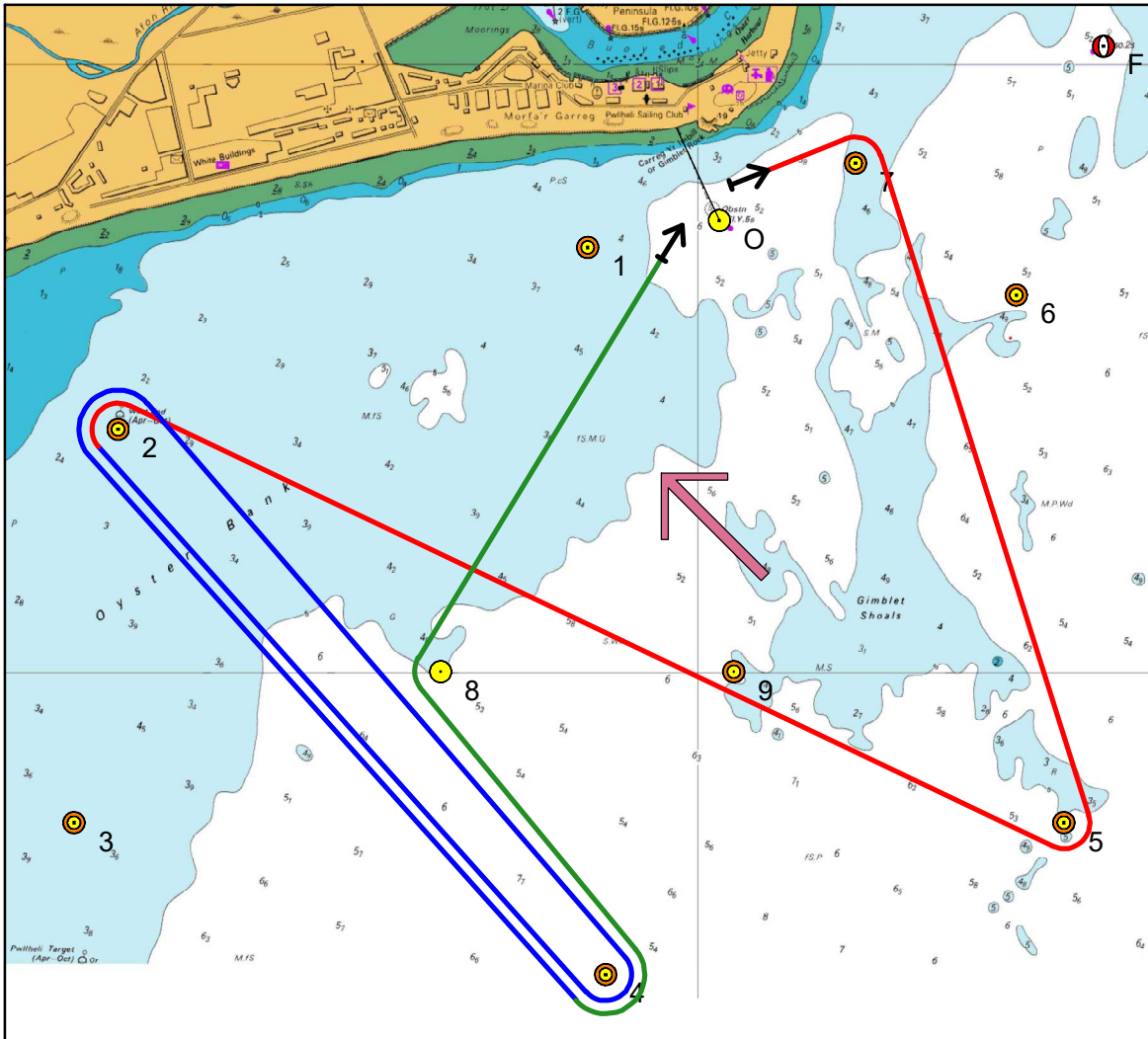
28	Wind	ESE
	Length	7.9
Mark	Heading	Distance
7s	068	0.25
6s	139	0.39
1p	282	0.71
2p	249	0.83
5p	113	1.69
9p	295	0.60
5p	115	0.60
6p	354	0.81
0p	292	0.53
1p	257	0.21
6p	102	0.71
0p	292	0.53





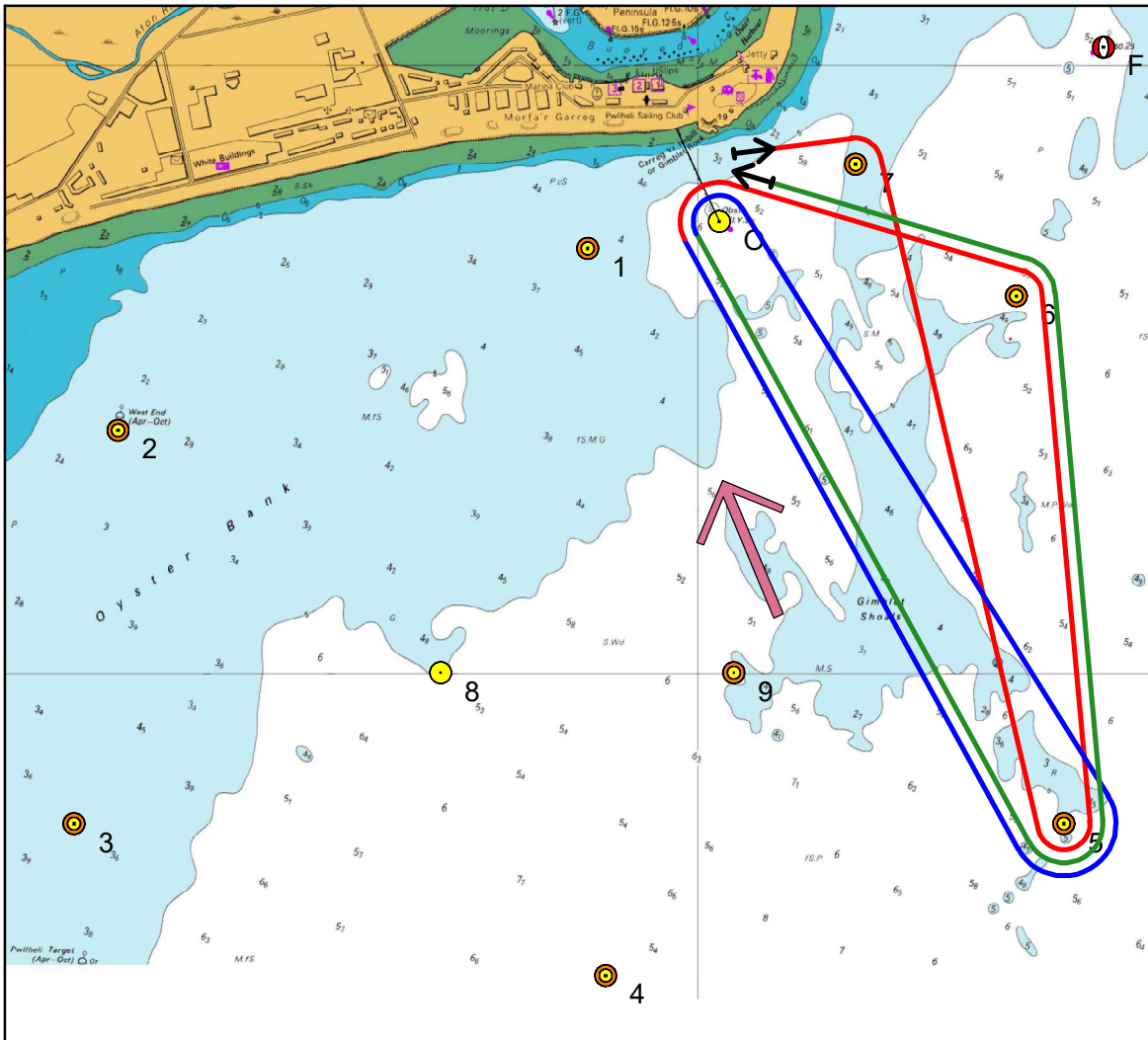


31	Wind	124-146
	Length	6.7
Mark	Heading	Distance
7s	068	0.25
6s	139	0.39
1p	282	0.71
5p	140	1.23
6p	354	0.81
0p	292	0.53
1p	257	0.21
5p	140	1.23
6p	354	0.81
0p	292	0.53

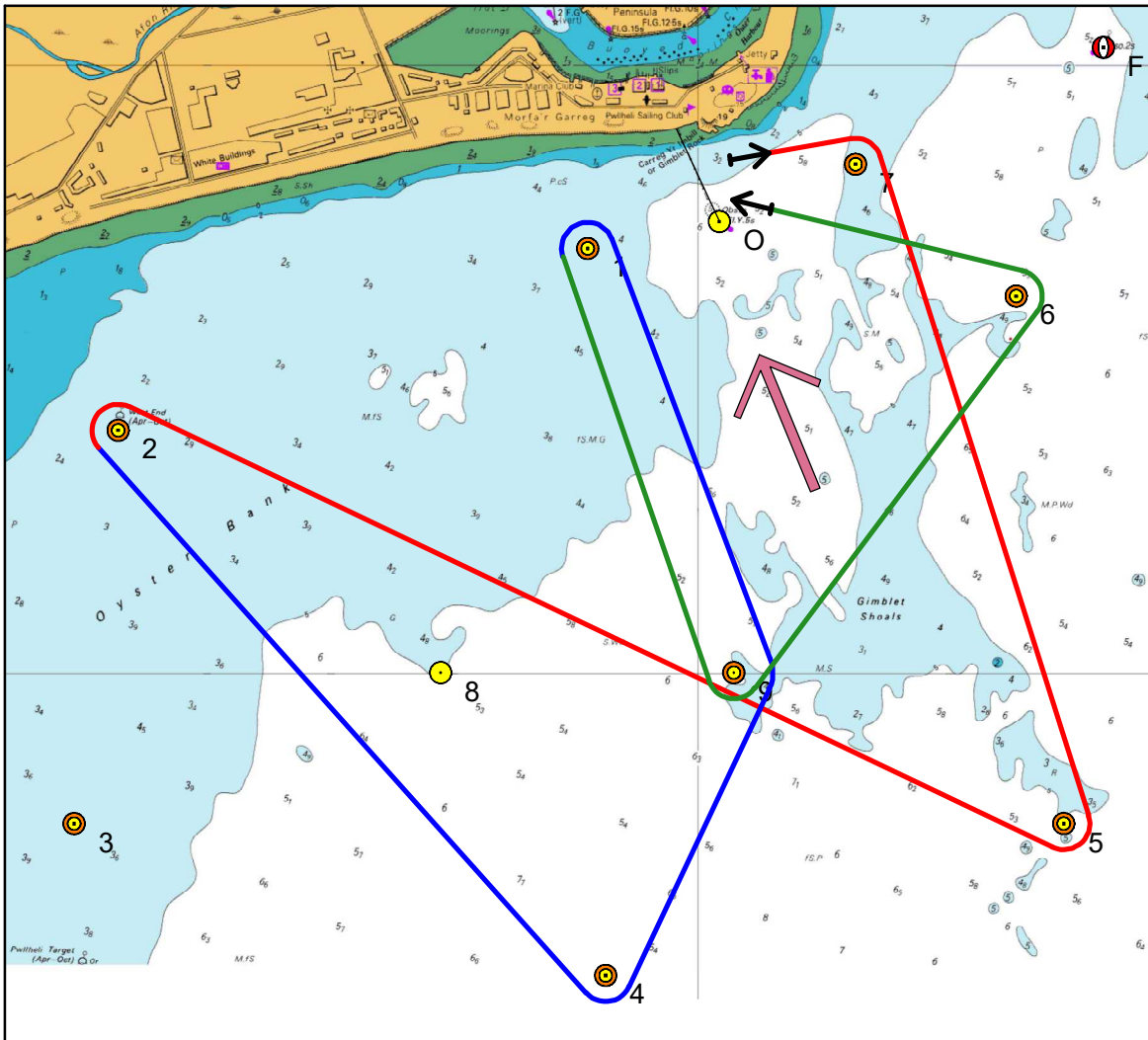


32	Wind	SE
	Length	8.2
Mark	Heading	Distance
7s	068	0.25
5s	162	1.14
2p	293	1.69
4p	138	1.21
2p	318	1.21
4p	138	1.21
8s	331	0.57
0s	031	0.87





34	Wind	147-168
	Length	7.5
Mark	Heading	Distance
7s	068	0.25
5p	162	1.14
6p	354	0.81
0p	292	0.53
5p	150	1.15
0p	330	1.15
5p	150	1.15
6p	354	0.81
0p	292	0.53



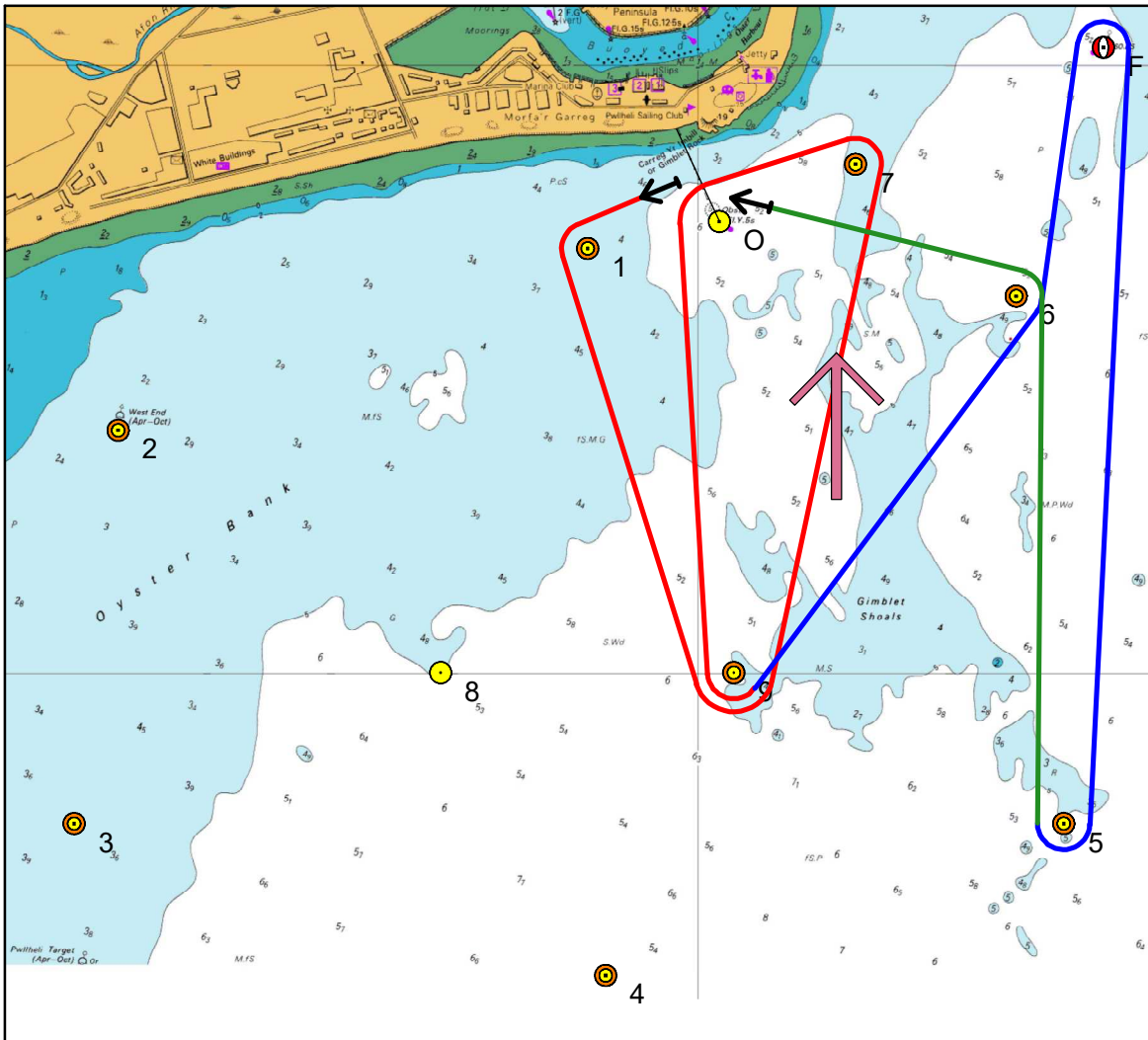
35	Wind	SSE
	Length 7.6	
Mark	Heading	Distance
7s	068	0.25
5s	162	1.14
2p	293	1.69
4p	138	1.21
9p	023	0.54
1p	341	0.74
9p	161	0.74
6p	039	0.71
0p	292	0.53



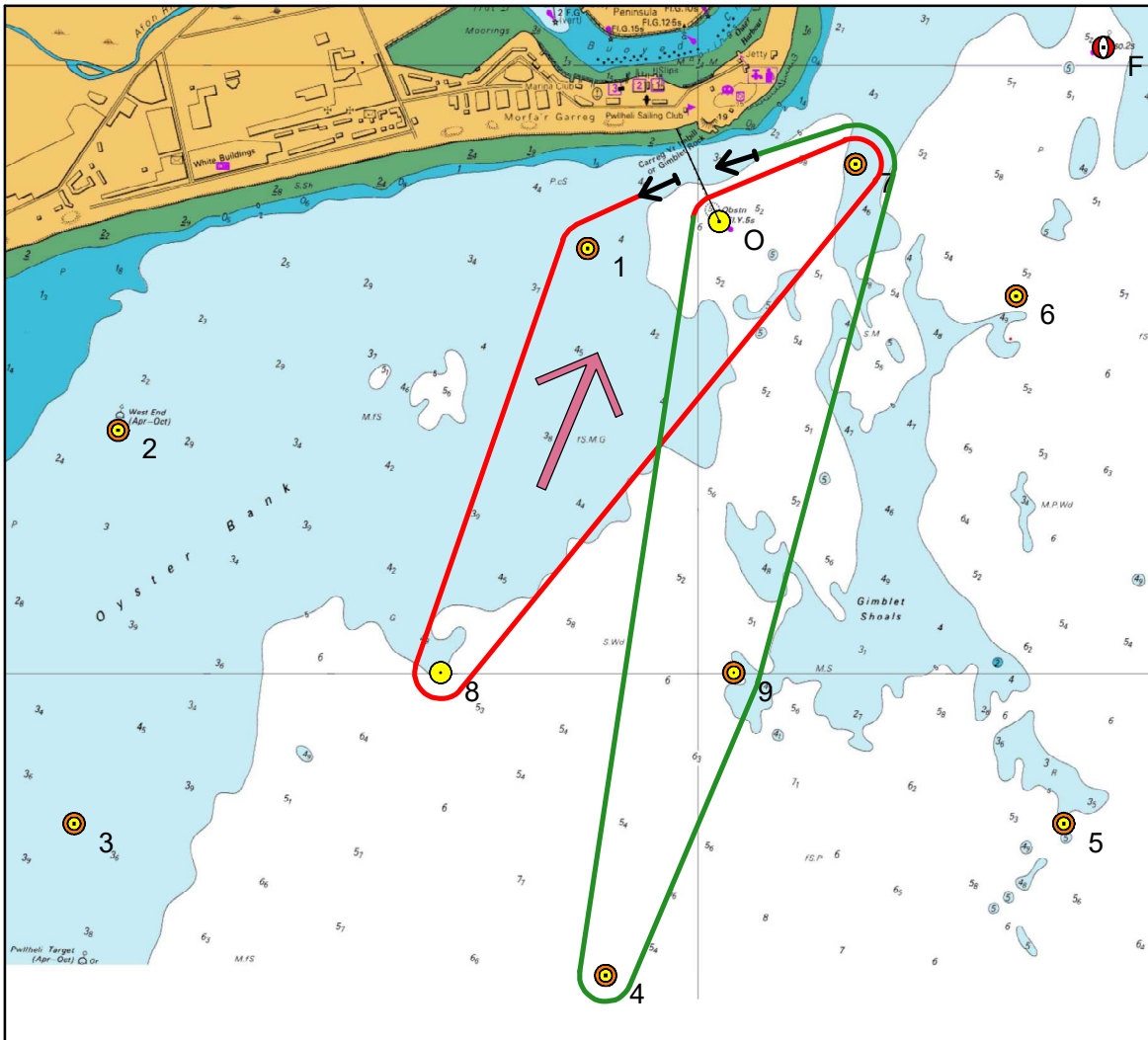




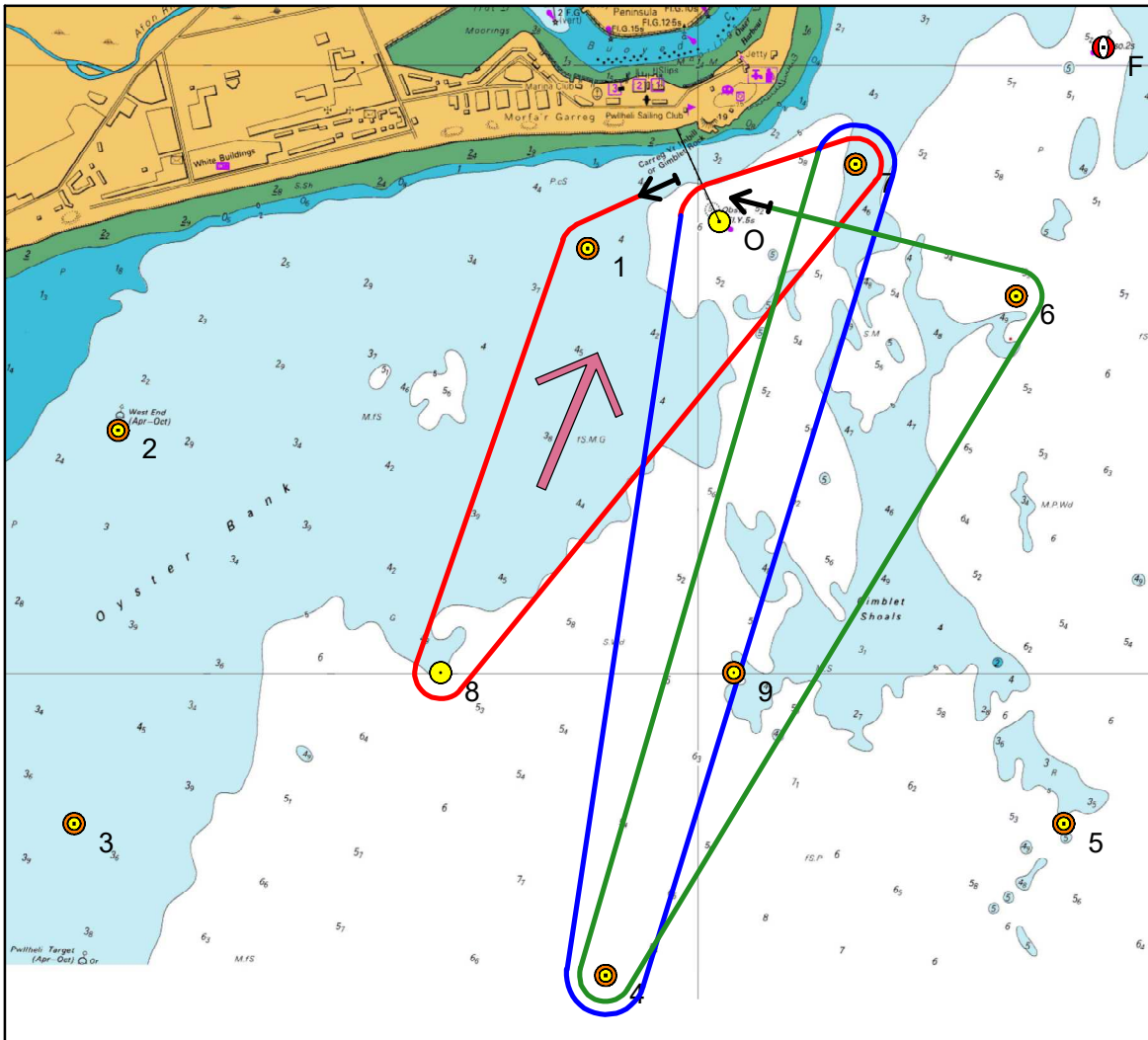




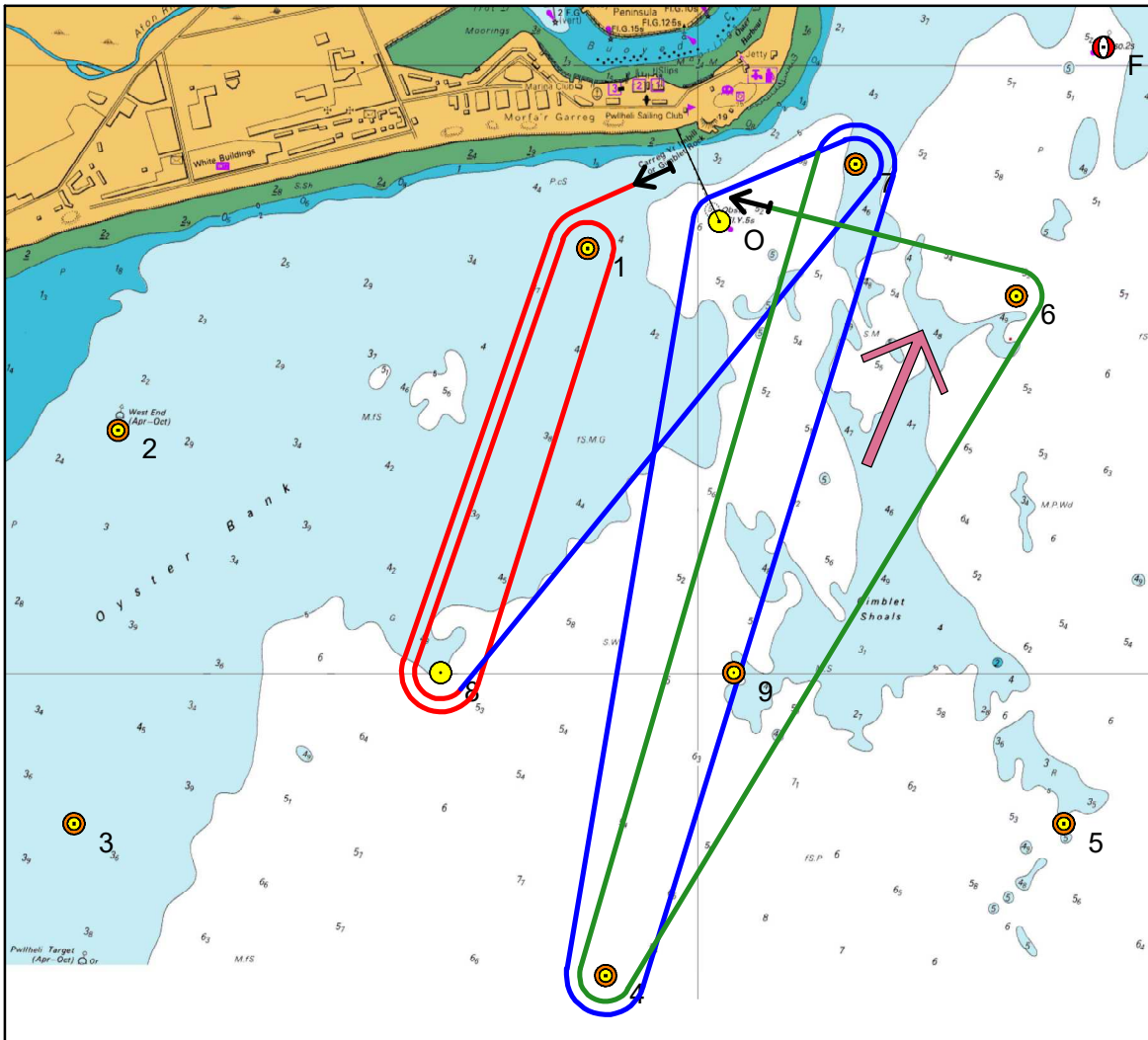
Mark	Wind S	
	Length 6.6	
Mark	Heading	Distance
1p	257	0.21
9p	161	0.74
7p	013	0.86
0p	248	0.25
9p	177	0.75
6p	039	0.71
Fs	011	0.46
5s	180	1.25
6p	354	0.81
0p	292	0.53



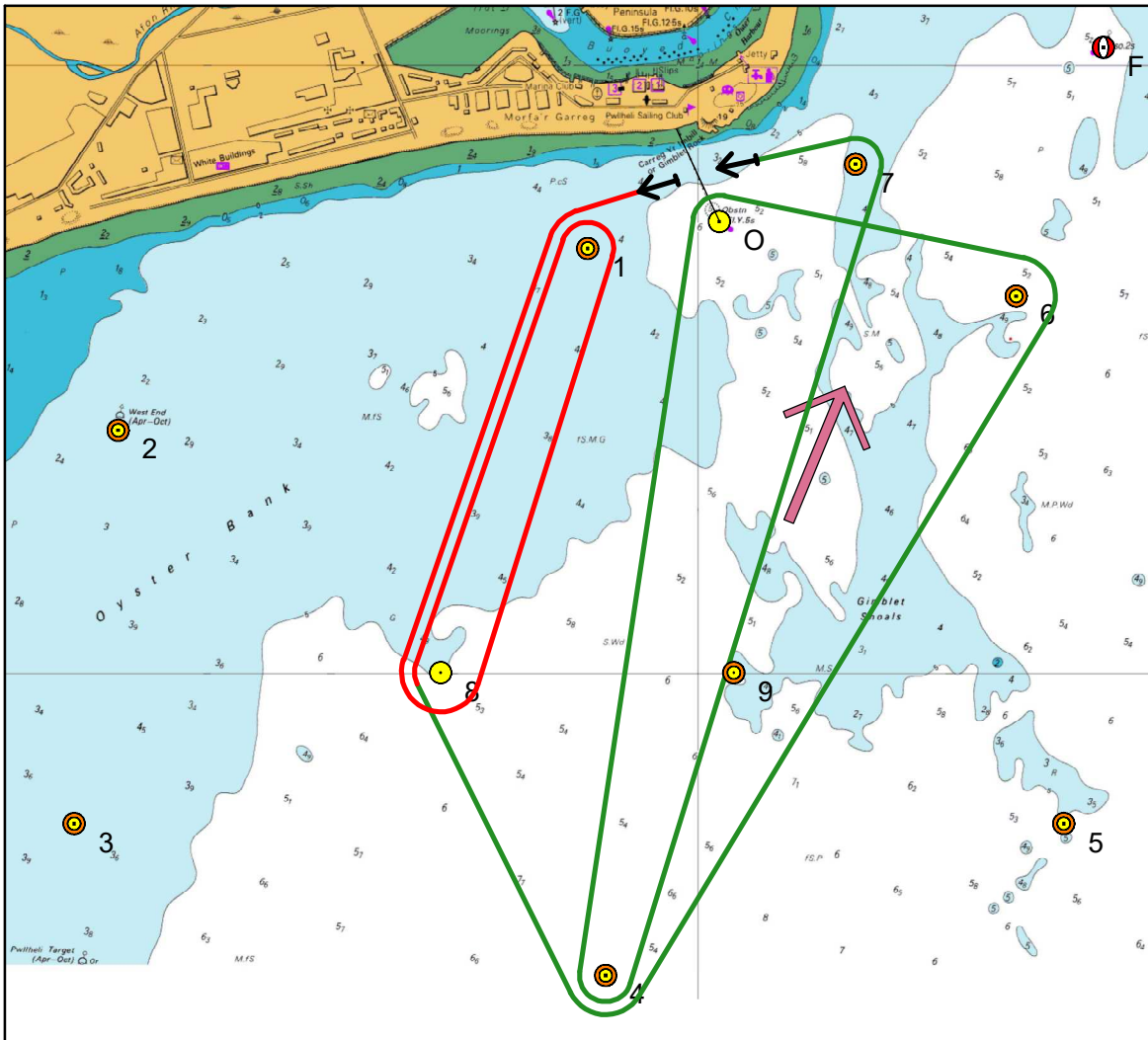
41	Wind	SSW
	Length 5.2	
Mark	Heading	Distance
1p	257	0.21
8p	199	0.74
7p	039	1.08
0p	248	0.25
4p	188	1.26
9p	023	0.54
7p	013	0.86
0p	248	0.25



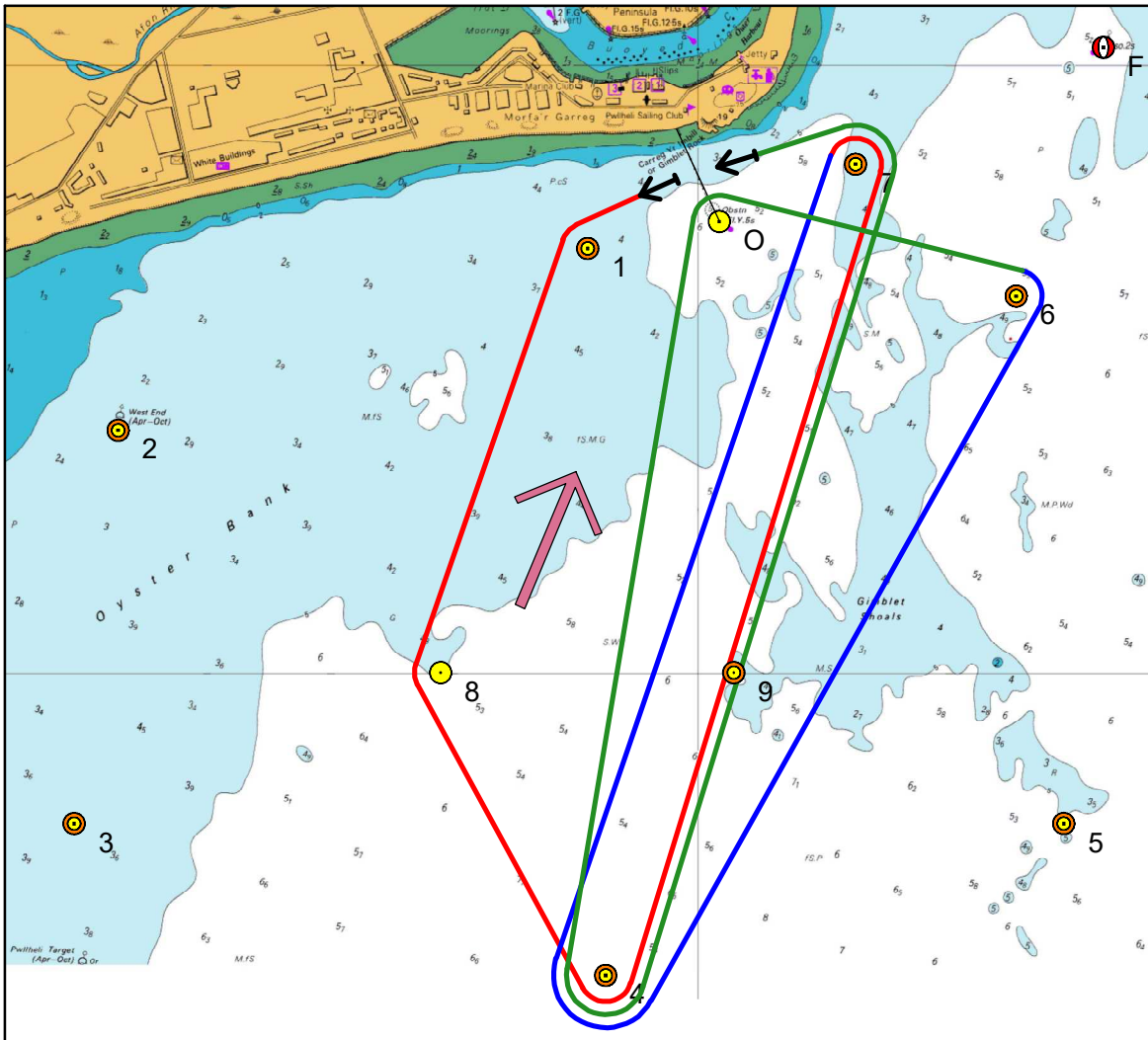
42	Wind	202
	Length	8.1
Mark	Heading	Distance
1p	257	0.21
8p	199	0.74
7p	039	1.08
0p	248	0.25
4p	188	1.26
7p	017	1.40
4p	197	1.40
6p	032	1.24
0p	292	0.53



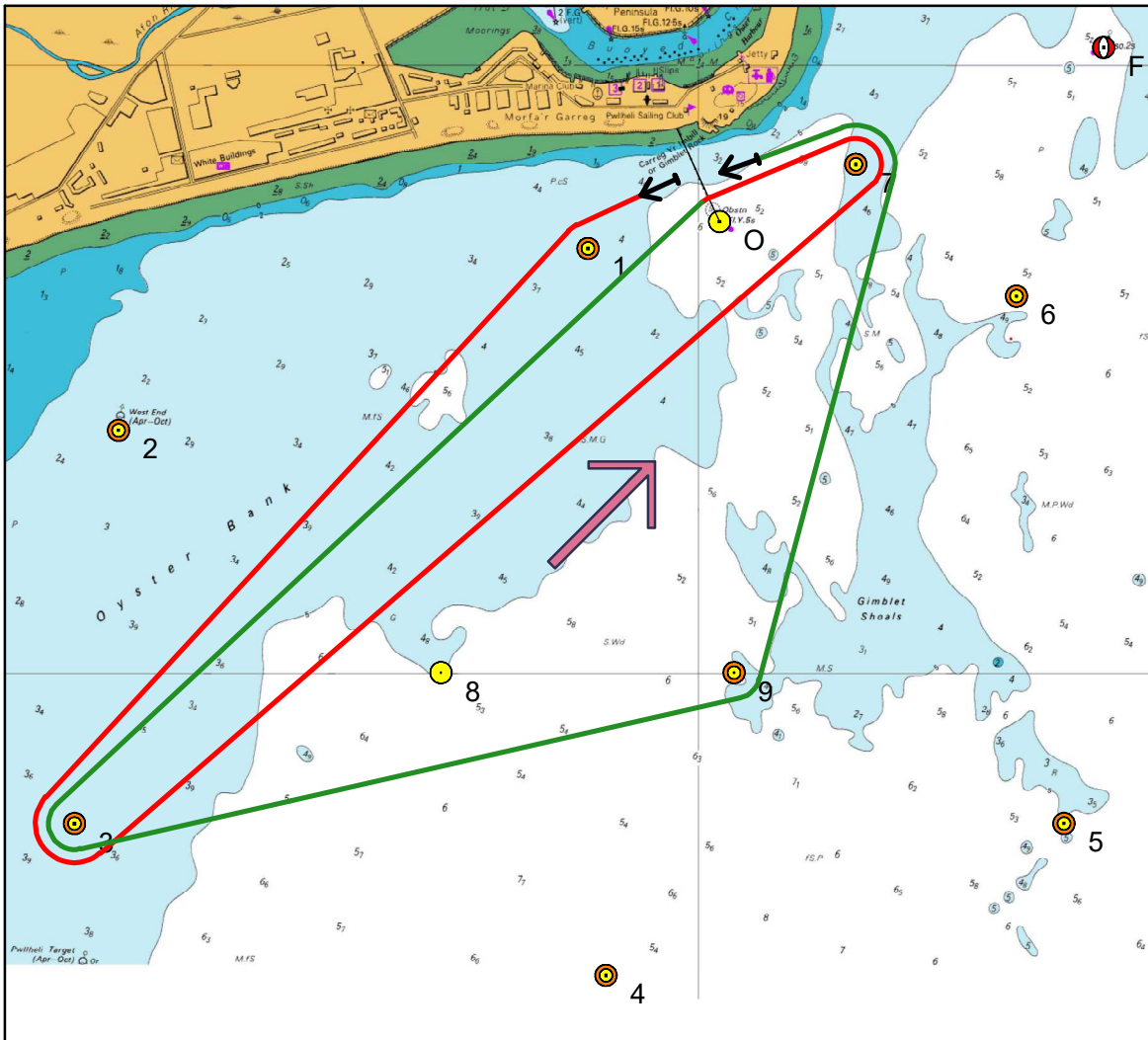
43	Wind	192-213
	Length	9.6
Mark	Heading	Distance
1p	257	0.21
8p	199	0.74
1p	019	0.74
8p	199	0.74
7p	039	1.08
0p	248	0.25
4p	188	1.26
7p	017	1.40
4p	197	1.40
6p	032	1.24
0p	292	0.53



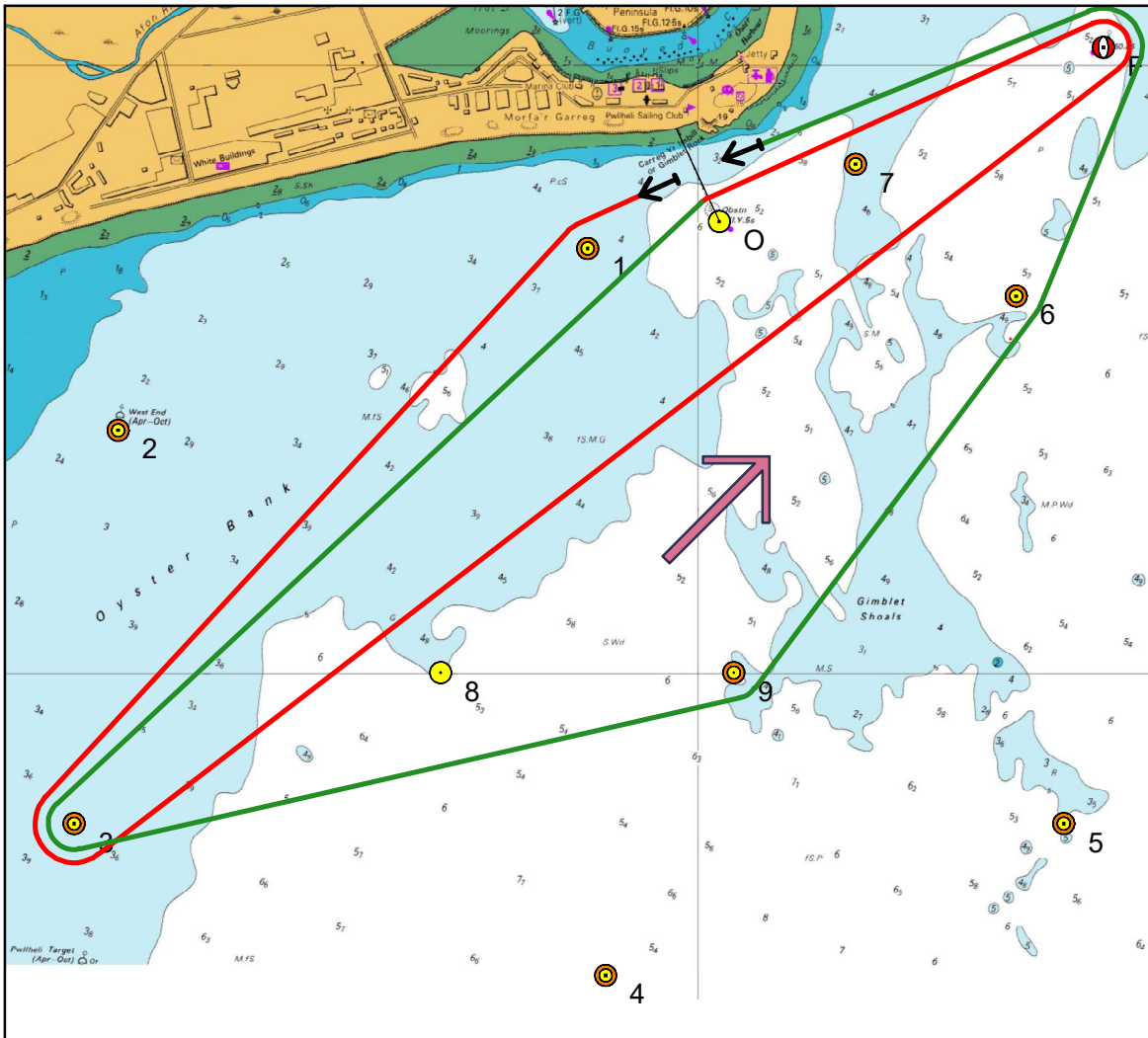
44	Wind	SSW
	Length 7.7	
Mark	Heading	Distance
1p	257	0.21
8p	199	0.74
1p	019	0.74
8p	199	0.74
4p	151	0.57
6p	032	1.24
0p	292	0.53
4p	188	1.26
7p	017	1.40
0p	248	0.25



45	Wind	SSW
	Length 9.0	
Mark	Heading	Distance
1p	257	0.21
8p	199	0.74
4p	151	0.57
7p	017	1.40
4p	197	1.40
6p	032	1.24
0p	292	0.53
4p	188	1.26
7p	017	1.40
0p	248	0.25

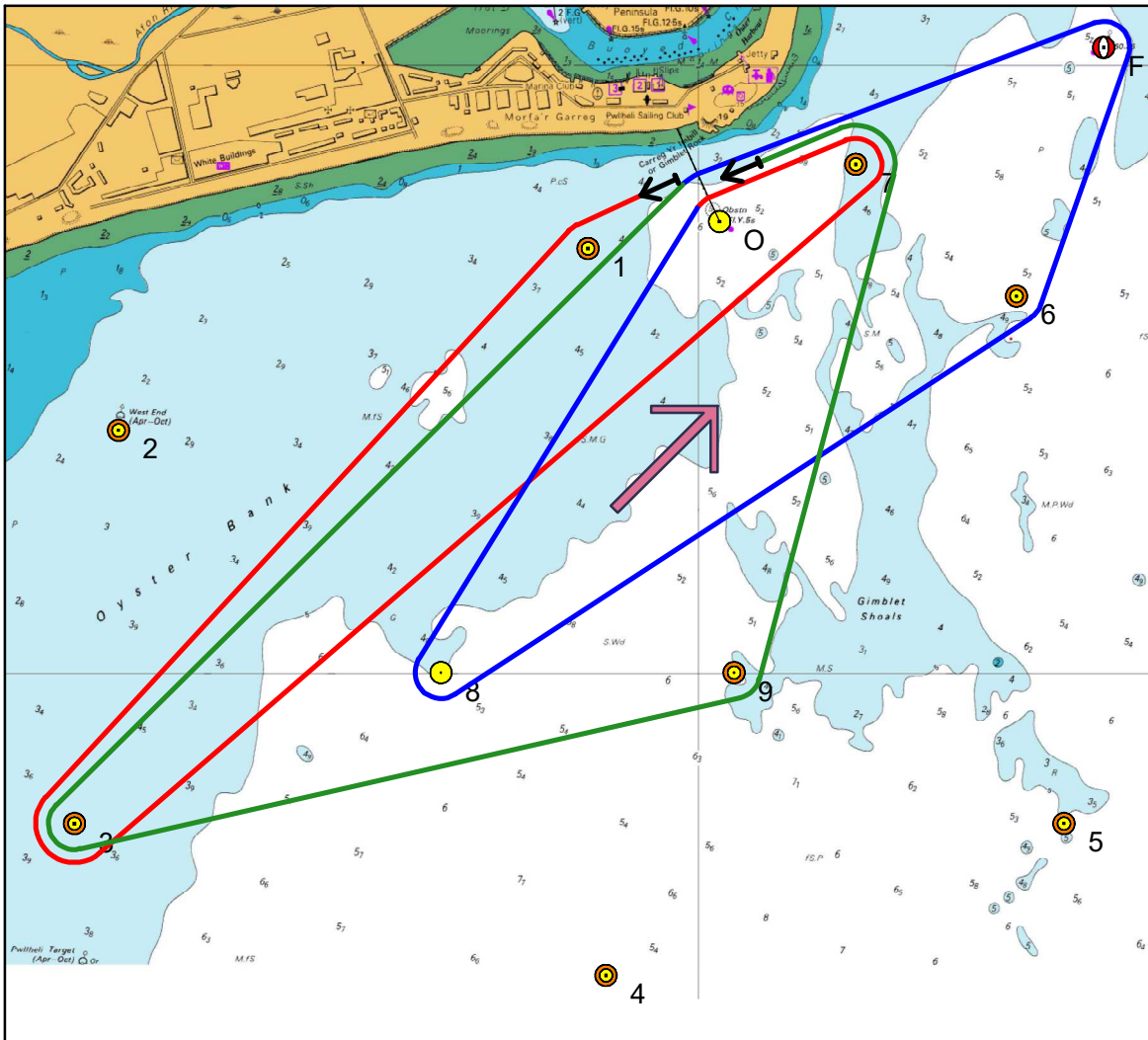


46	Wind SW	
	Length 7.1	
Mark	Heading	Distance
1p	257	0.21
3p	222	1.27
7p	050	1.69
0p	248	0.25
3p	226	1.45
9p	077	1.12
7p	013	0.86
0p	248	0.25

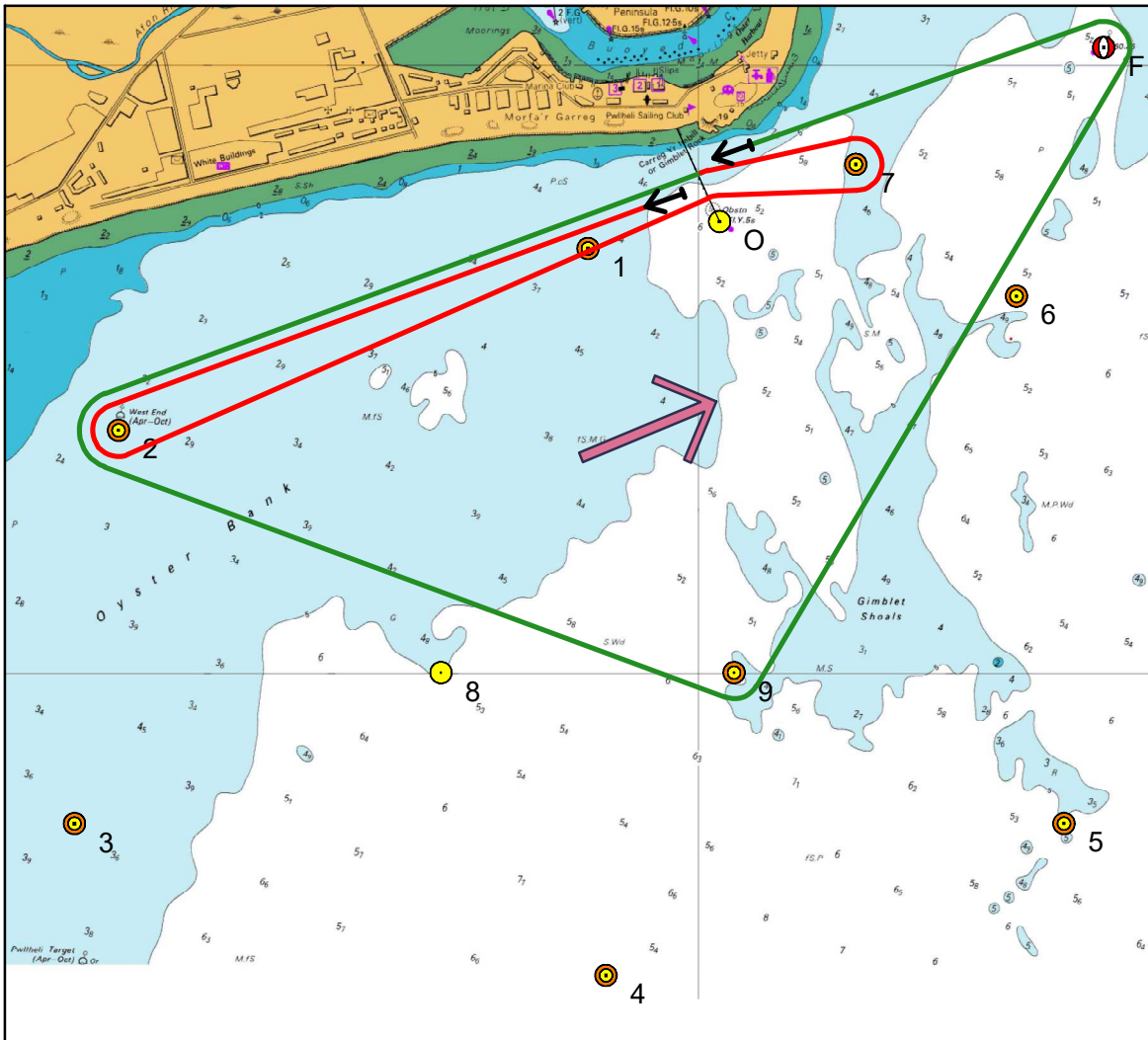


47	Wind	225
	Length	8.5
Mark	Heading	Distance
1p	257	0.21
3p	222	1.27
Fp	053	2.06
Op	246	0.63
3p	226	1.45
9p	077	1.12
6p	039	0.71
Fp	011	0.46
Op	246	0.63

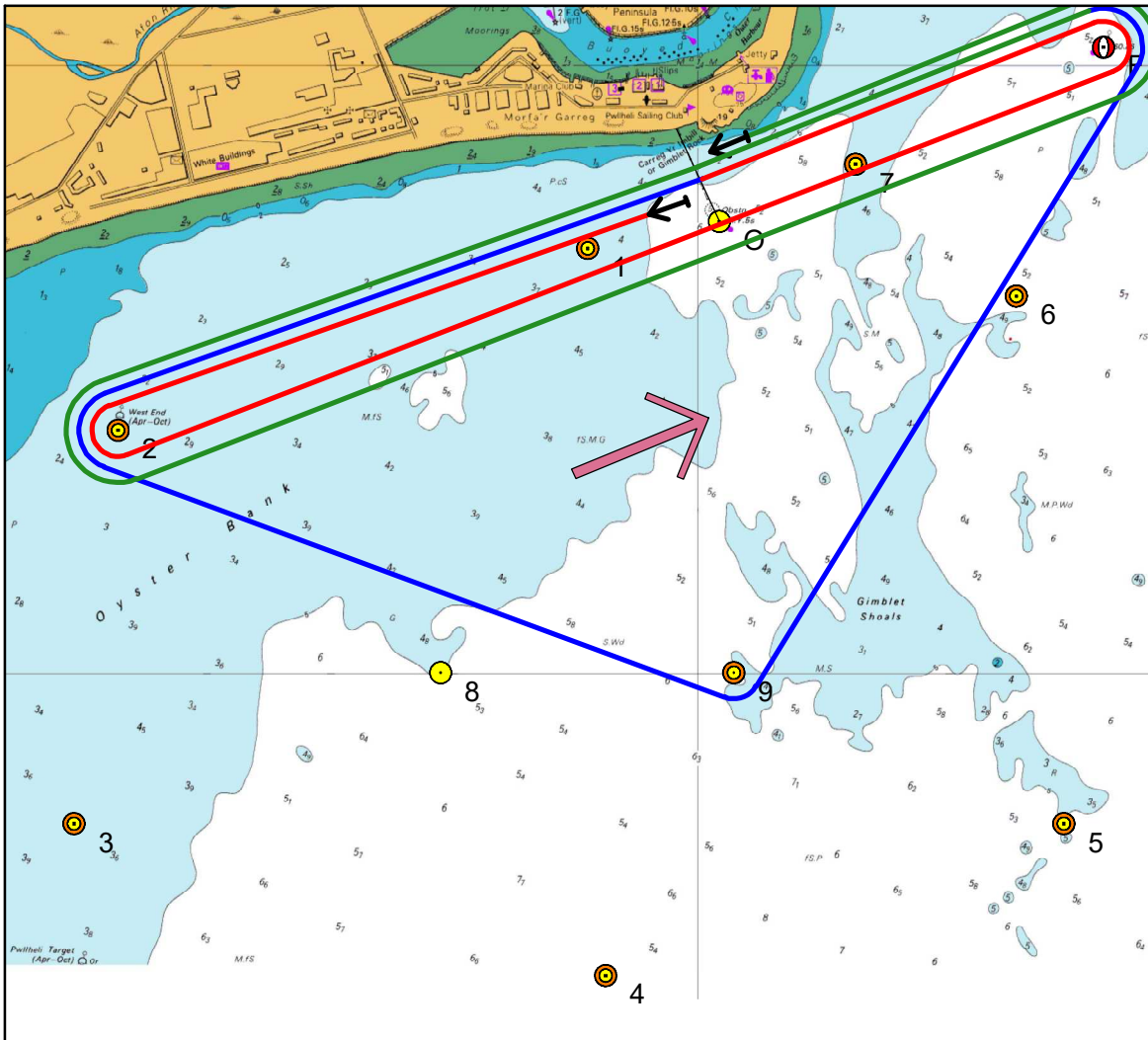




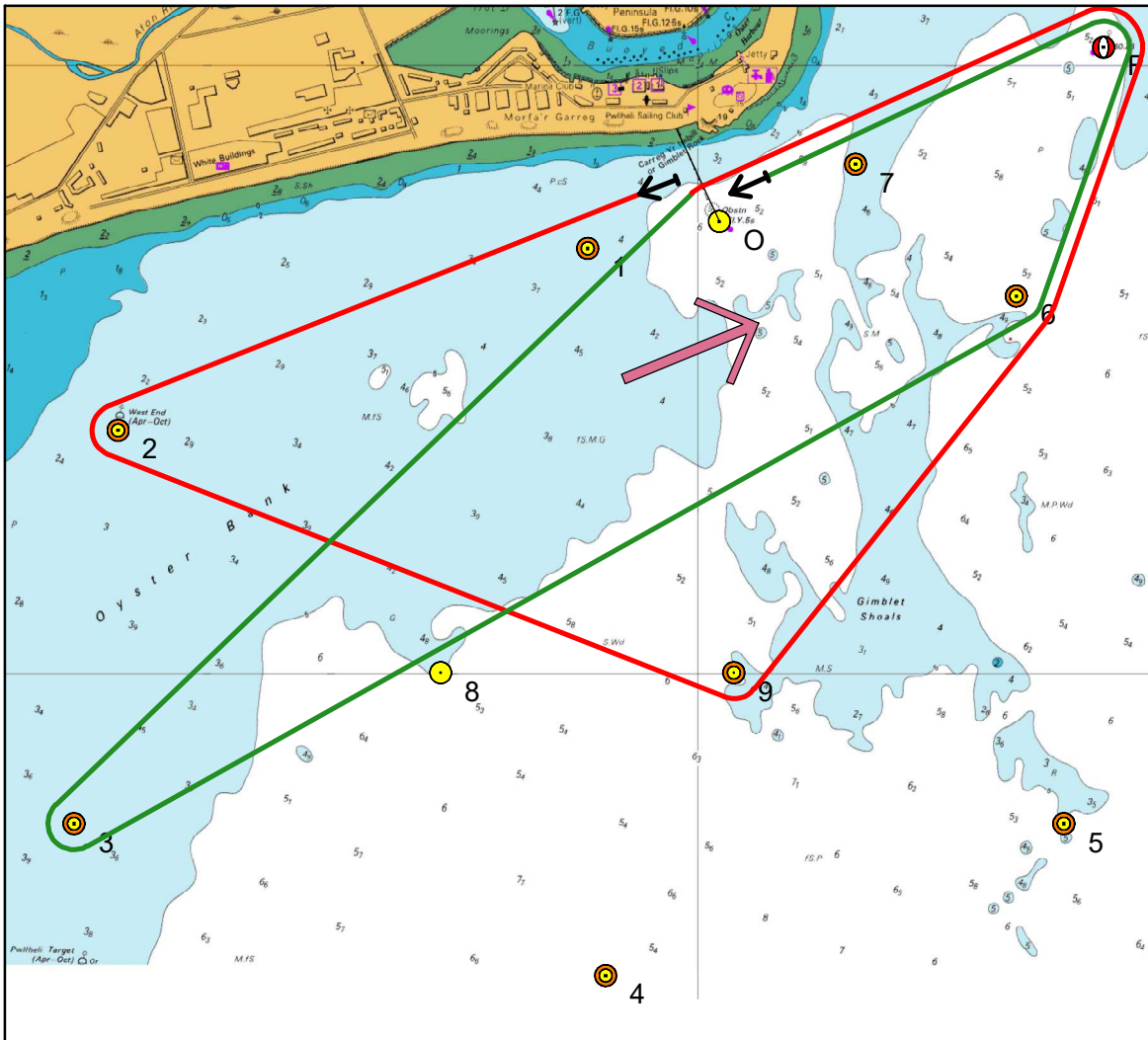
49	Wind	SW
	Length	10.2
Mark	Heading	Distance
1p	257	0.21
3p	222	1.27
7p	050	1.69
0p	248	0.25
8p	211	0.87
6p	060	1.09
Fp	011	0.46
0p	246	0.63
3p	226	1.45
9p	077	1.12
7p	013	0.86
0p	248	0.25



50	Wind	WSW
	Length 6.5	
Mark	Heading	Distance
2p	250	1.04
0s	070	1.04
7p	068	0.25
0p	248	0.25
2p	250	1.04
9p	112	1.09
Fp	029	1.14
0p	246	0.63

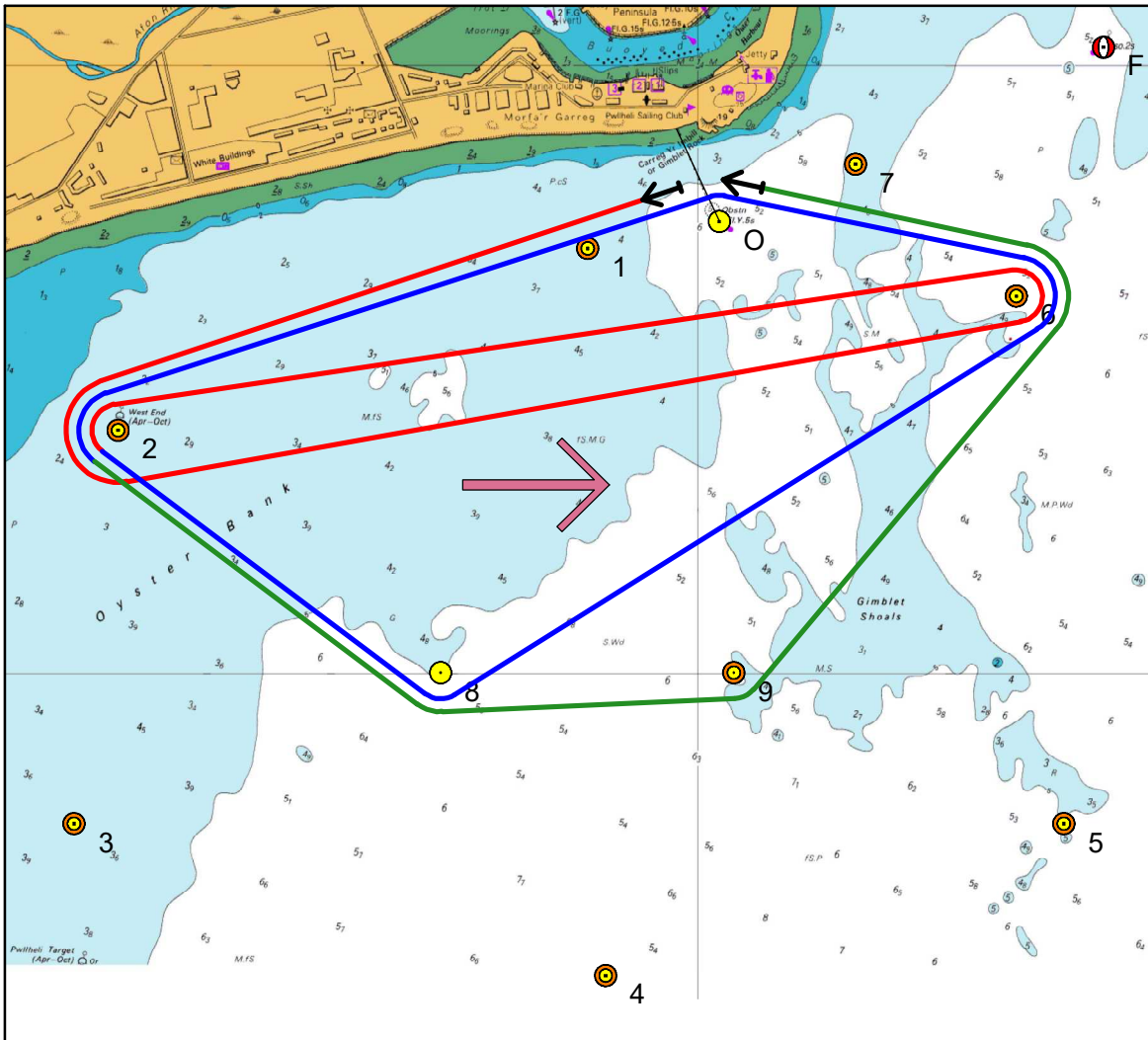


51	Wind	247
	Length	10.6
Mark	Heading	Distance
2p	250	1.04
Fp	069	1.67
Op	246	0.63
2p	250	1.04
9p	112	1.09
Fp	029	1.14
Op	246	0.63
2p	250	1.04
Fp	069	1.67
Op	246	0.63



52	Wind	237-258
	Length	8.2
Mark	Heading	Distance
2p	250	1.04
9P	112	1.09
6P	039	0.71
Fp	011	0.46
Op	246	0.63
3p	226	1.45
6p	063	1.74
Fp	011	0.46
Op	246	0.63

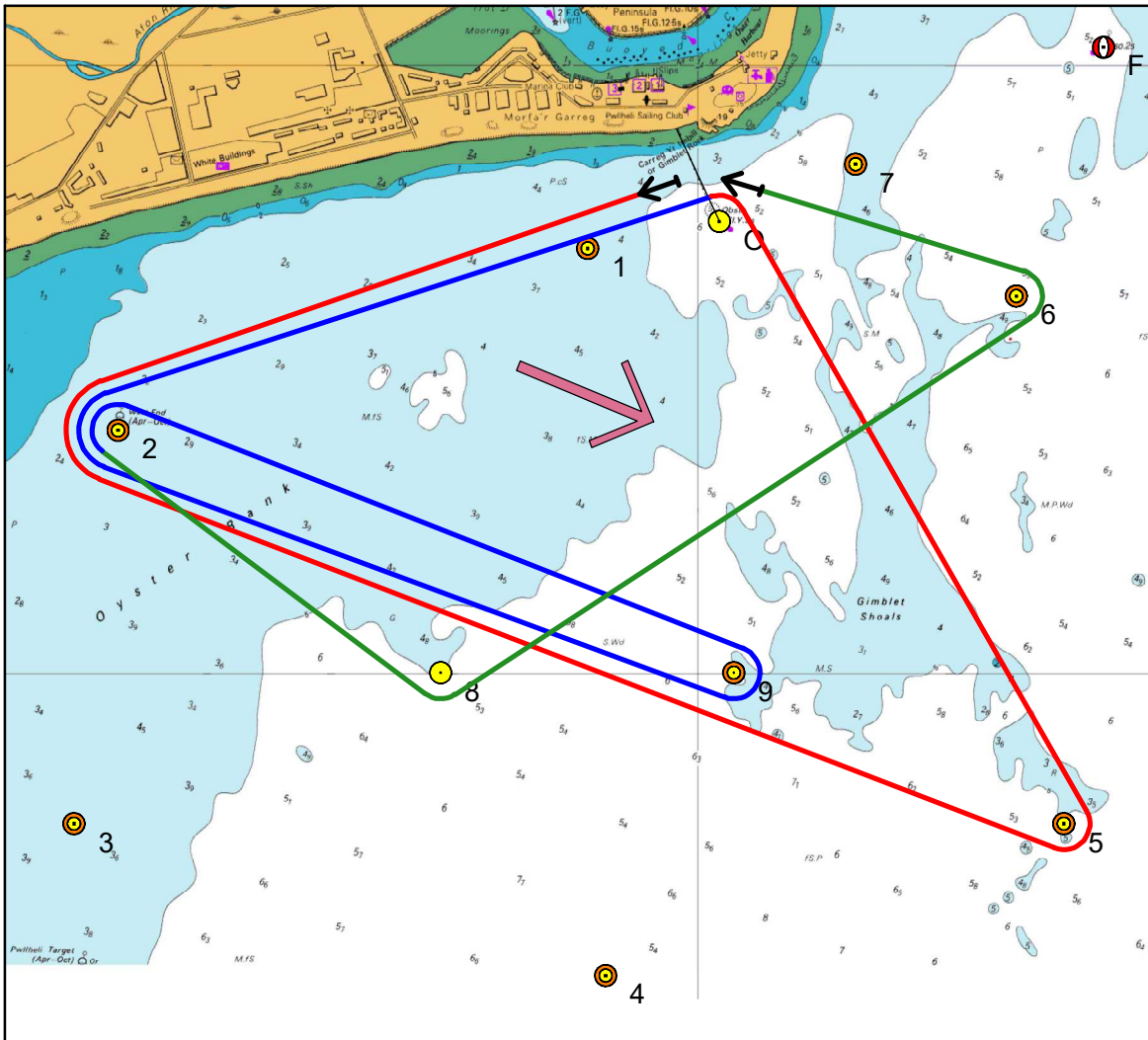




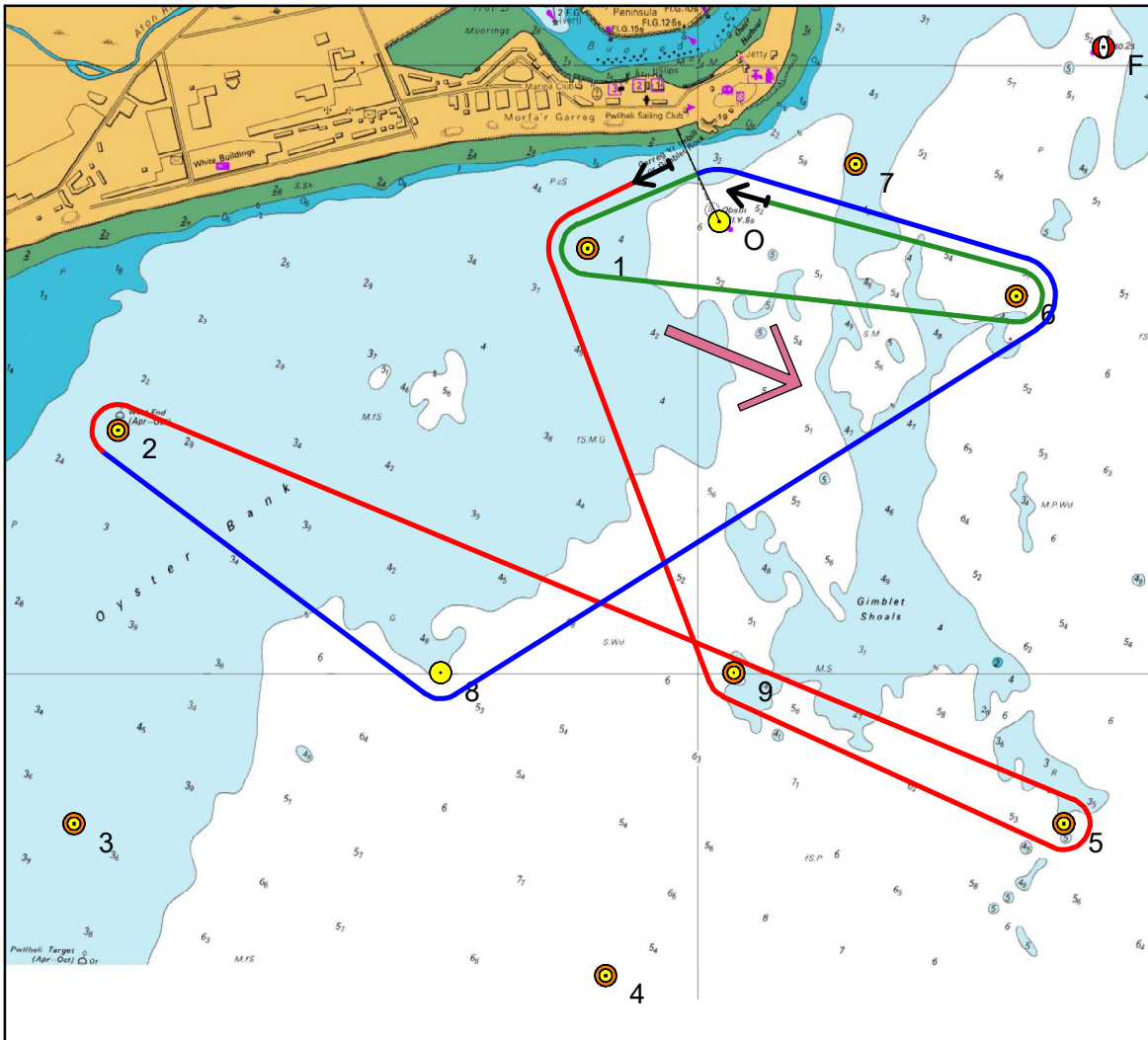




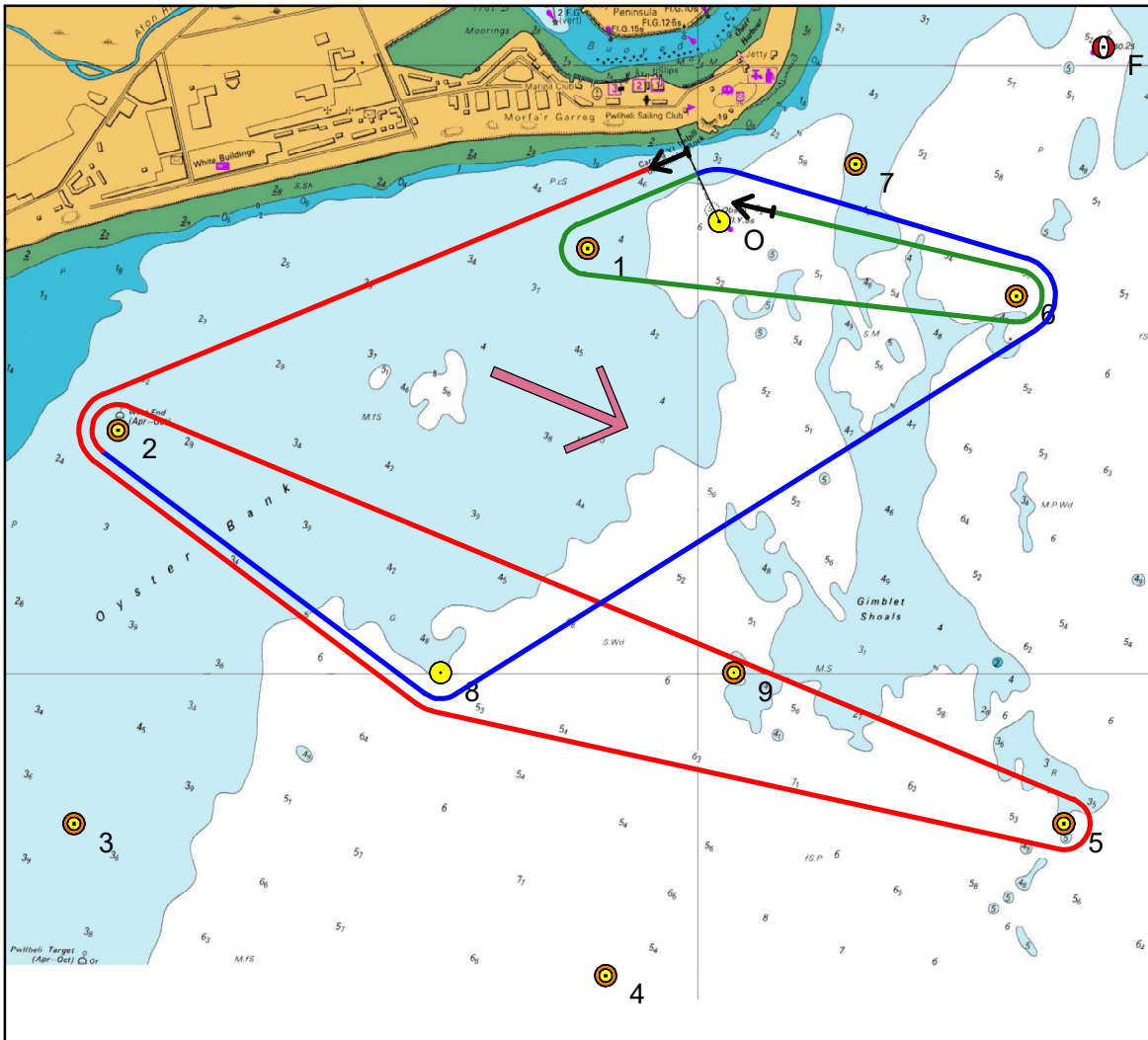




58	Wind	282-303
	Length	9.4
Mark	Heading	Distance
2p	250	1.04
5p	113	1.69
0p	330	1.15
2p	250	1.04
9p	112	1.09
2p	292	1.09
8p	127	0.67
6p	060	1.09
0p	292	0.53

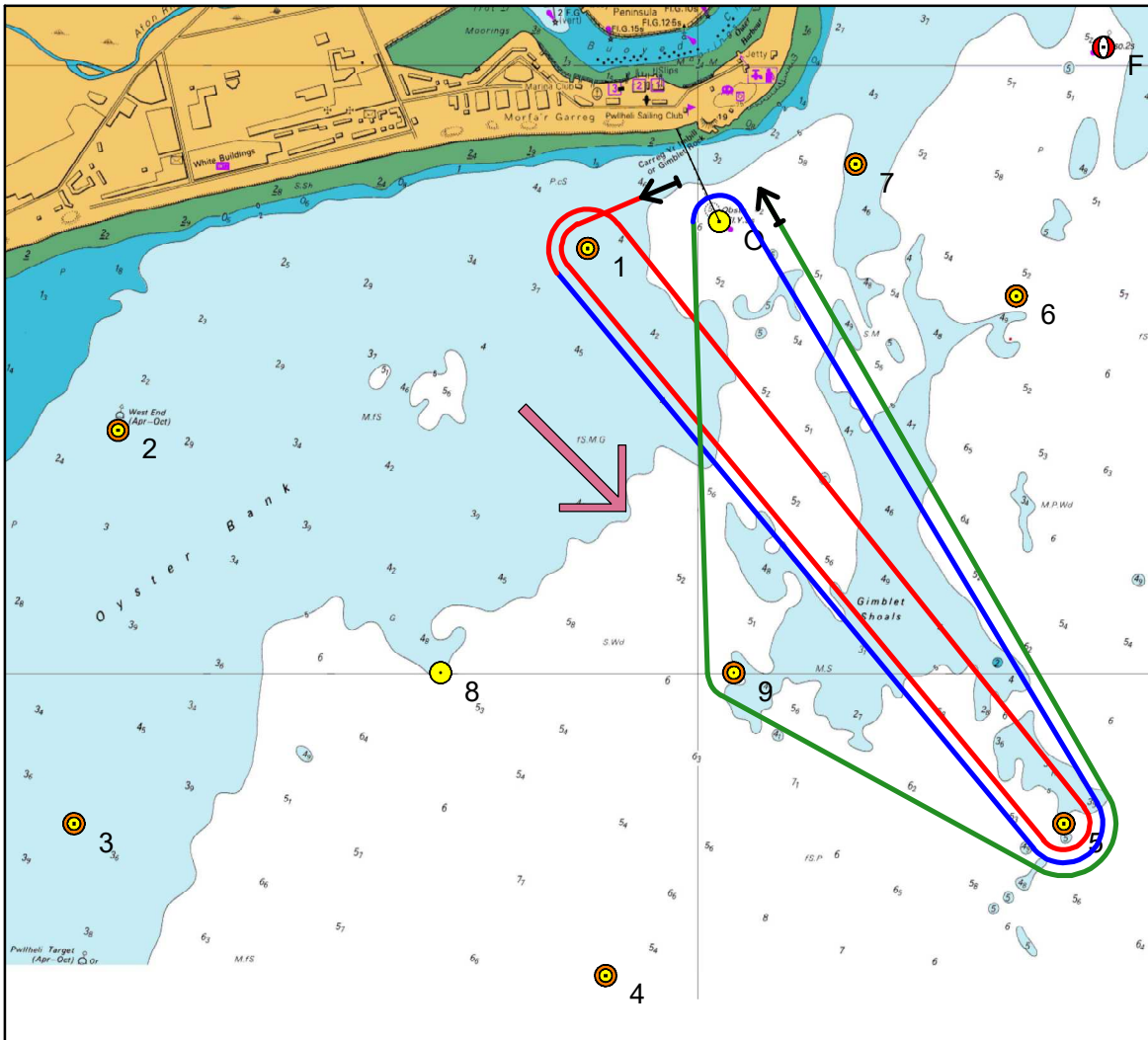


59	Wind	WNW
	Length 7.0	
Mark	Heading	Distance
1p	257	0.21
9p	161	0.74
5p	115	0.60
2p	293	1.69
8p	127	0.67
6p	060	1.09
0p	292	0.53
1p	257	0.21
6p	102	0.71
0p	292	0.53

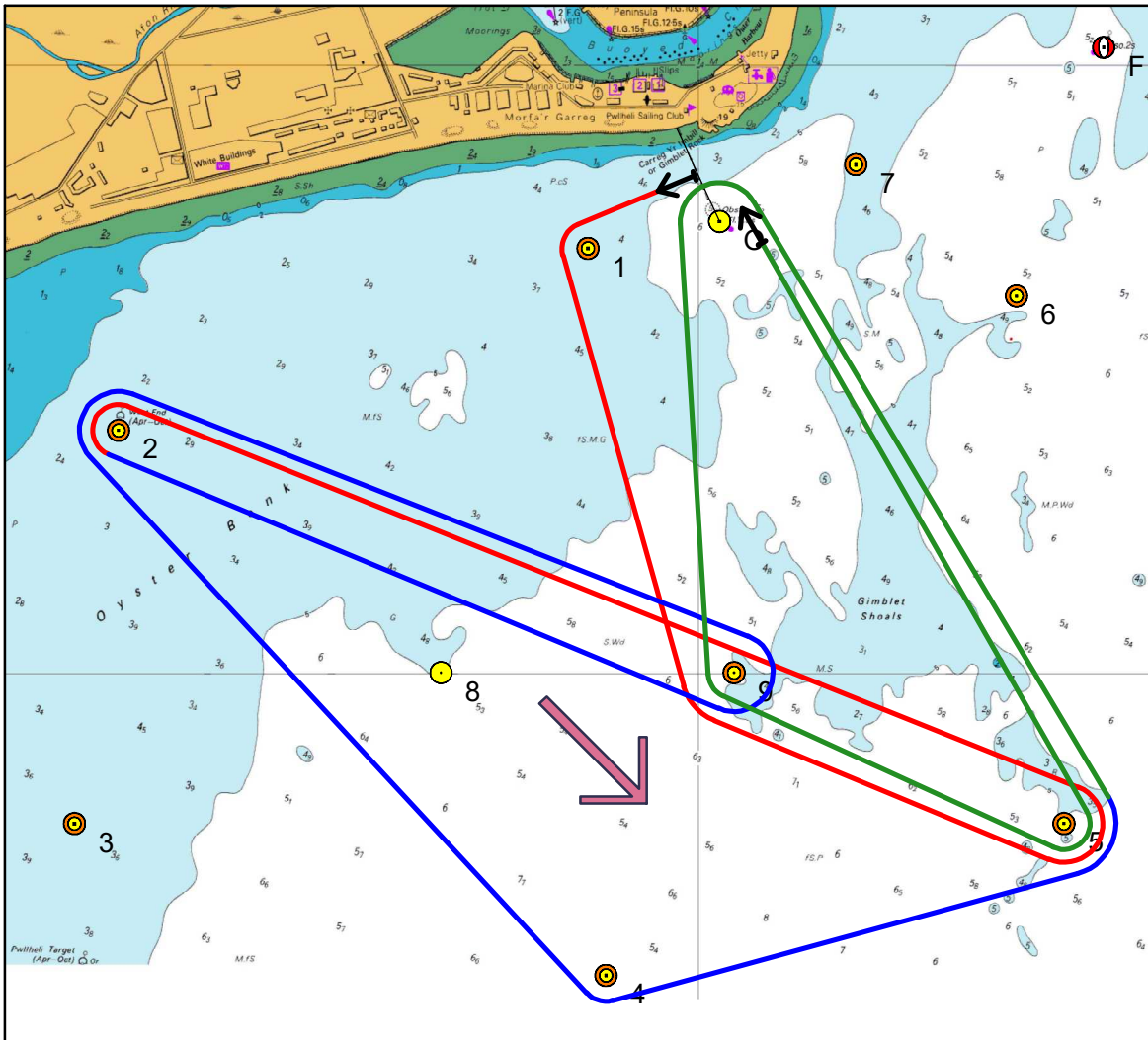


60	Wind	WNW
	Length 8.2	
Mark	Heading	Distance
2p	250	1.04
8p	127	0.67
5p	104	1.06
2p	293	1.69
8p	127	0.67
6p	060	1.09
0p	292	0.53
1p	257	0.21
6p	102	0.71
0p	292	0.53

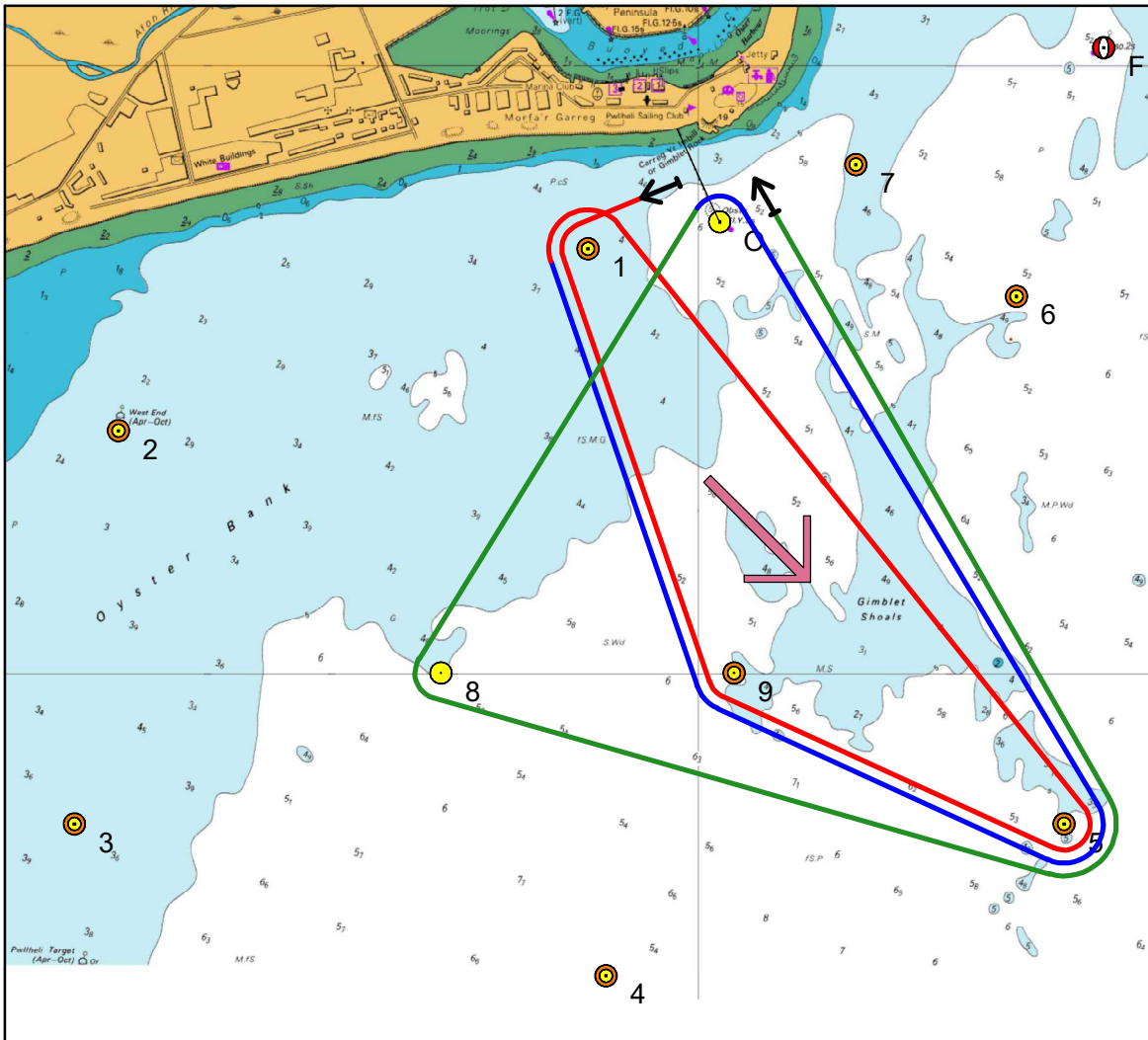




62	Wind	315
	Length	7.6
Mark	Heading	Distance
1p	257	0.21
5p	140	1.23
1p	320	1.23
5p	140	1.23
0p	330	1.15
9p	177	0.75
5p	115	0.60
0p	330	1.15

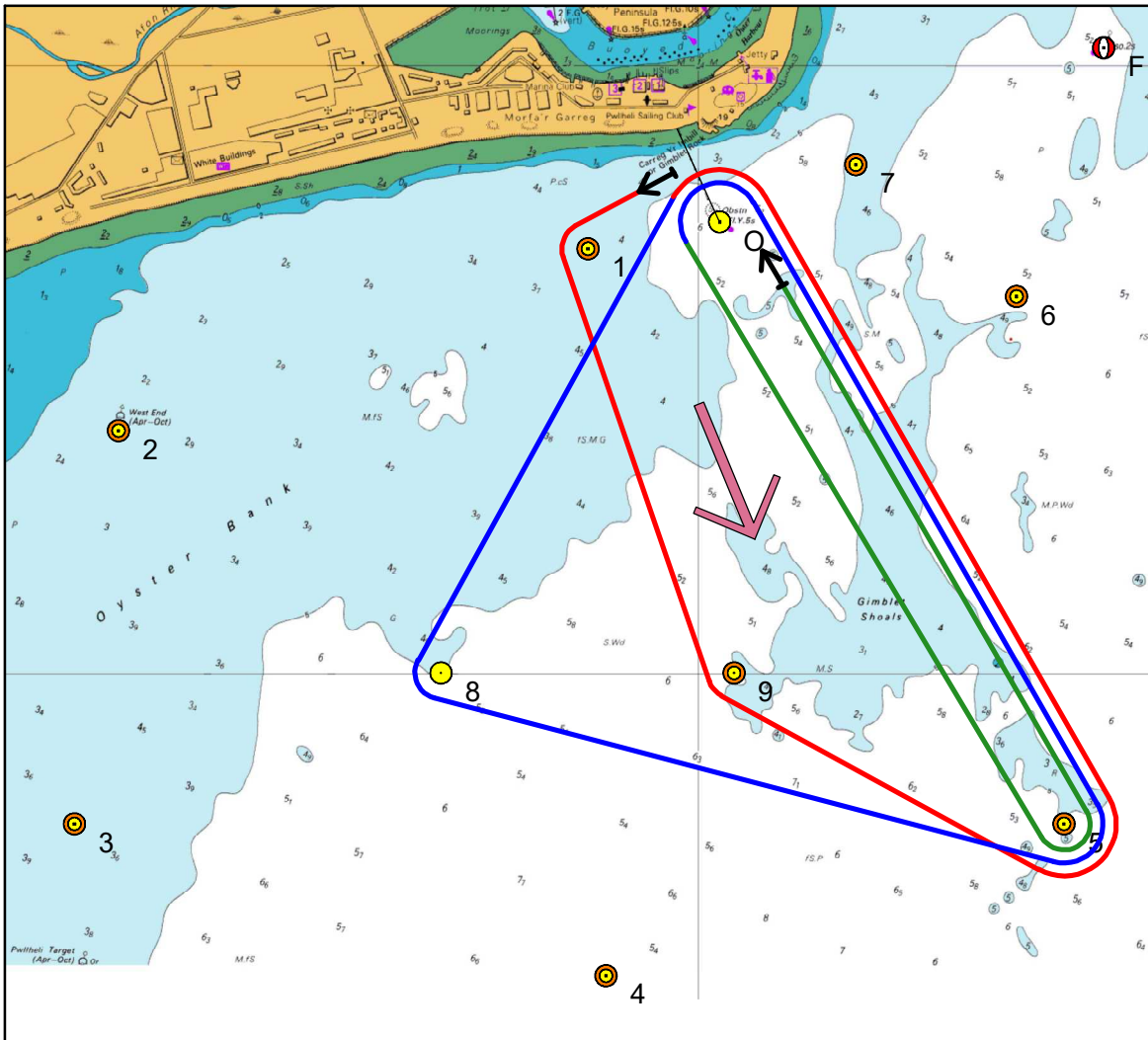


63	Wind	304-326
	Length	11.1
Mark	Heading	Distance
1p	257	0.21
9p	161	0.74
5p	115	0.60
2p	293	1.69
9p	112	1.09
2p	292	1.09
4p	138	1.21
5p	072	0.80
0p	330	1.15
9p	177	0.75
5p	115	0.60
0p	330	1.15



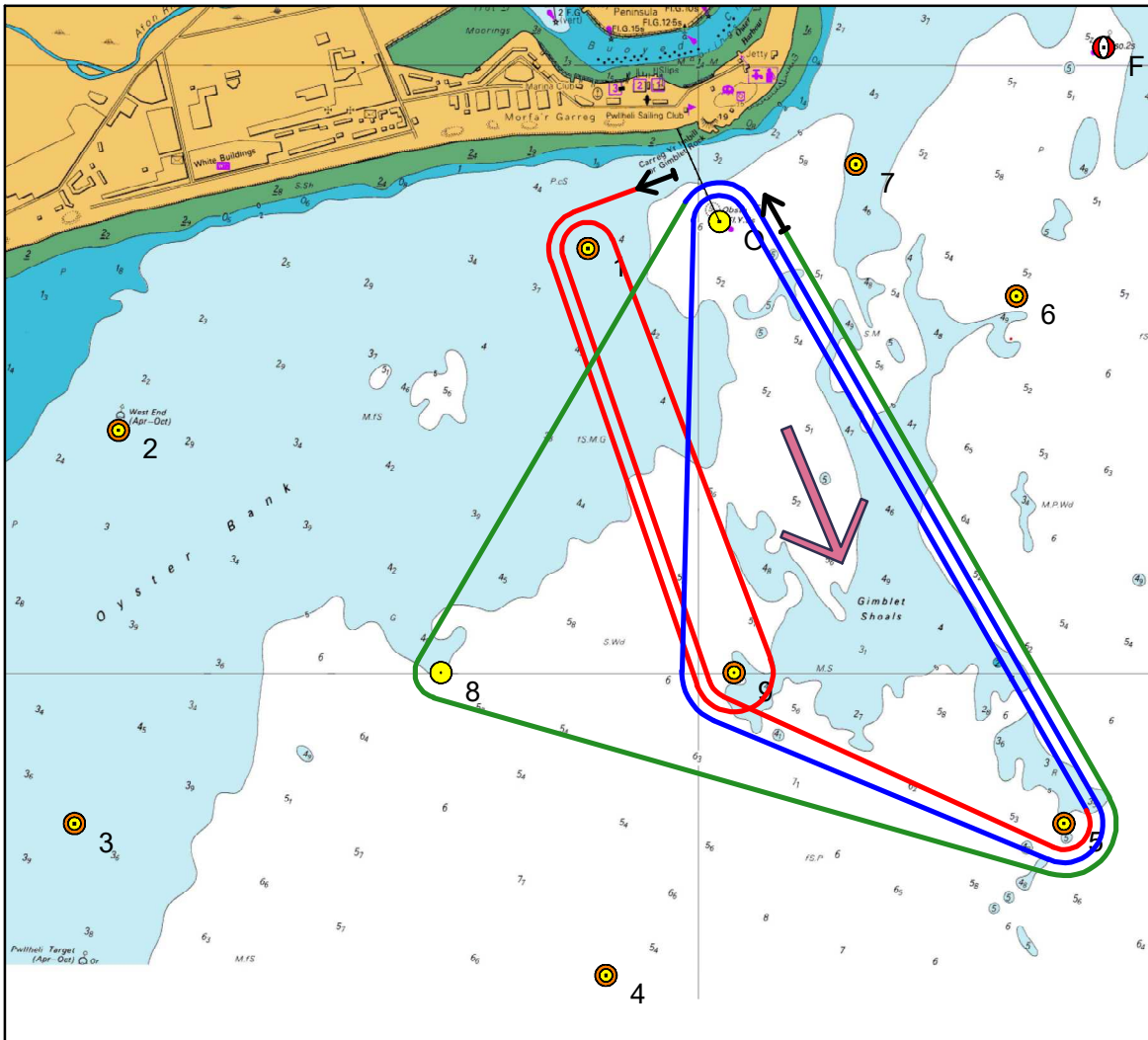
64	Wind	NW
	Length	8.4
Mark	Heading	Distance
1p	257	0.21
9p	161	0.74
5p	115	0.60
1p	320	1.23
9p	161	0.74
5p	115	0.60
0p	330	1.15
8p	211	0.87
5p	104	1.06
0p	330	1.15





66	Wind	337
	Length	8.1
Mark	Heading	Distance
1p	257	0.21
9p	161	0.74
5p	115	0.60
0p	330	1.15
8p	211	0.87
5p	104	1.06
0p	330	1.15
5p	150	1.15
0p	330	1.15





68	Wind	NNW
	Length 9.8	
Mark	Heading	Distance
1p	257	0.21
9p	161	0.74
1p	341	0.74
9p	161	0.74
5p	115	0.60
0p	330	1.15
9p	177	0.75
5p	115	0.60
0p	330	1.15
8p	211	0.87
5p	104	1.06
0p	330	1.15